

Improvements to Fairhope Tennis Addition

Fairhope, Alabama

Prepared for

City of Fairhope

Fairhope, Alabama

Prepared by



Jinright & Associates Development Engineers
208 Greeno Road North Fairhope, Alabama 36532
P.O. Box 1929 Fairhope, Alabama 36533
251.928.3443 (tel) 251.928.3665 (fax)
jadengineers.com

TIM KANT, MAYOR

Fairhope City Council

Jack Burrell, President

Kevin G. Boone

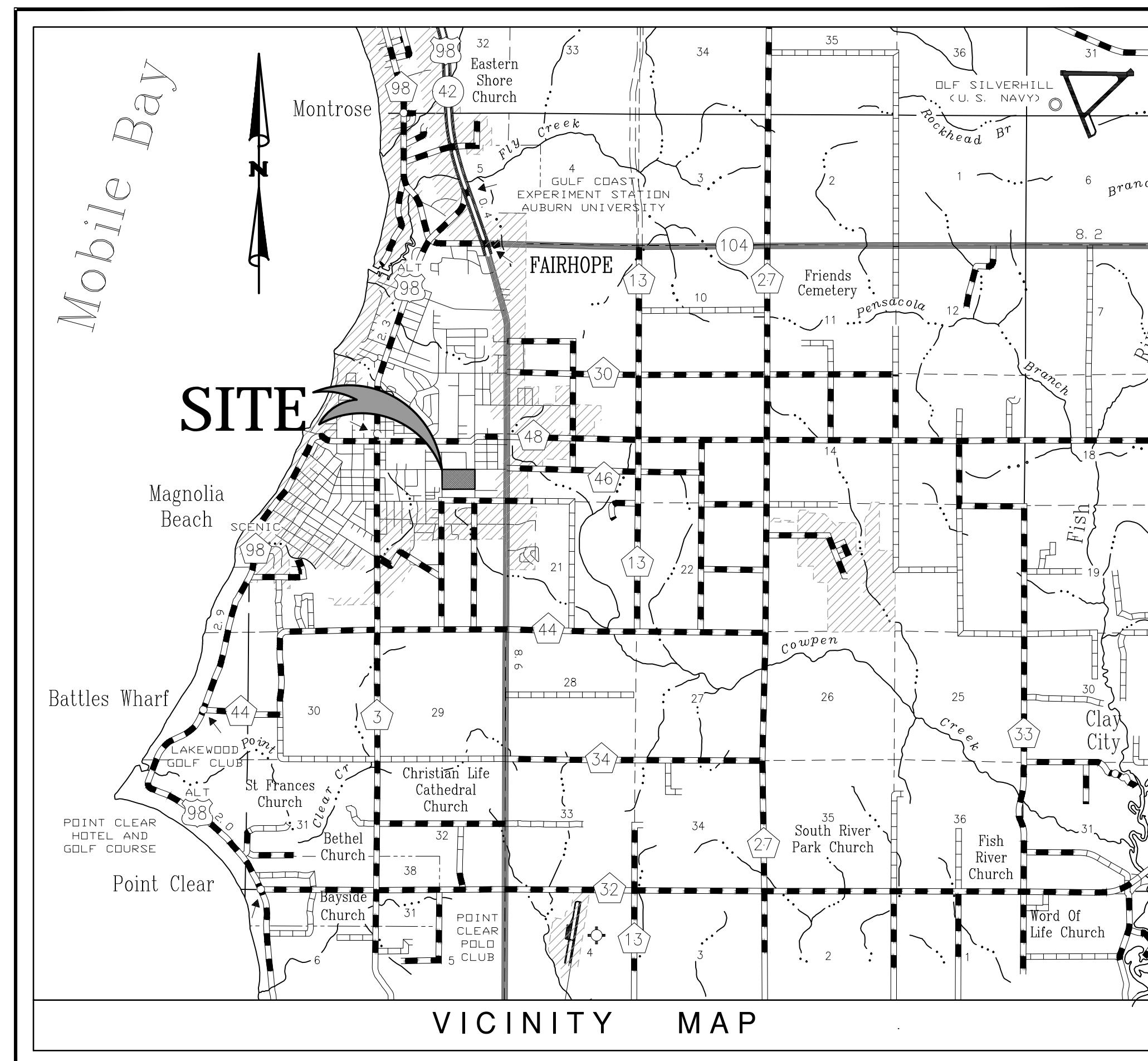
Diana J. Brewer

Michael A. Ford, A.C.M.O.

Richard A. Mueller, Sr.

Sheet List Table	
Sheet Number	Sheet Title
LC	COVER SHEET
CV100	EXISTING CONDITIONS
SP100	ASHPALT COURT PLAN
LG100	ASPHALT COURT GRADING PLAN
SP101	HYDROCOURT PLAN
LG101	HYDROCOURT GRADING PLAN
SP102	HYDROCOURT & ASPHALT PLAN
LG102	HYDROCOURT & ASPHALT COURT GRADING PLAN
LH500	HARDSCAPE DETAILS
LH501	HARDSCAPE DETAILS
LG500	GENERAL NOTES

BID NO: 012-15
JULY 2015



Not to Scale

ABBREVIATION LEGEND

ALUM	ALUMINUM	LP	LOW POINT
AC	ACRES	LT	LEFT
ACCOMP	ASPHALT-COATED	LIN	LINEAR
ACP	CORRUGATED METAL PIPE	LF	LINEAR FEET
APPROX	ASBESTOS CEMENT PIPE	LC	LANDSCAPE CONTRACTOR
B&B	APPROXIMATE(LY)	LA	LANDSCAPE ARCHITECT
BC	BALLED AND BURLAPPED	M	METER
BIT	BOTTOM OF CURB	MAX	MAXIMUM
BM	BITUMINOUS	MH	MANHOLE
BLDG	BENCHMARK	MIN	MINIMUM
BS	BUILDING	MISC	MISCELLANEOUS
BVC	BOTTOM OF SLOPE	MON	MONUMENT
BW	BEGINNING OF VERTICAL CURVE	N	NORTH
CAL	BOTH WAYS	NIC	NOT IN CONTRACT
CB	CALIPER	NTS	NOT TO SCALE
CI	CATCH BASIN	NO	NUMBER
CIR	CAST IRON	NOM	NOMINAL DIMENSION
CL	CIRCULAR	OC	ON CENTER
CLF	CENTERLINE	OD	OUTSIDE DIAMETER
CO	CHAIN-LINK FENCE	PA	PLANTING AREA
CM	CLEANOUT	PCP	POROUS CONCRETE PIPE
CMP	CENTIMETER	PVC	POLYVINYL CHLORIDE PIPE
COL	CORRUGATED METAL PIPE	PC	POINT OF CURVATURE
CONC	COLUMN	PCC	POINT OF COMPOUND CURVATURE
CONTR	CONCRETE	PL	PROPERTY LINE
COR	CONTRACTOR	PVC	POINT OF VERTICAL CURVATURE
C/S	CORNER	PVT	POINT OF VERTICAL TANGENT
C/W	CROSS SLOPE	PT	POINT OF TANGENT
CF	CONNECTED WITH	R	RADIUS
CY	CUBIC FEET	RCP	REINFORCED CONCRETE PIPE
D	CUBIC YARD	ROW	RIGHT OF WAY
DETL	DEGREE OF CURVATURE	RT	RIGHT
DMH	DETAIL	REQD	REQUIRED
DF	DROP MANHOLE	REV	REVISION
DIM	DRINKING FOUNTAIN	REINF	REINFORCED
DIA	DIMENSION	SAN	SANITARY
DWG	DIAMETER	SECT	SECTION
DEP	DRAWING	SH	SHEET
DIR	DEPARTURE	S	SOUTH
-E-	DIRECTED	SI	STORM INLET
E	ELECTRICAL	-ST-	STORM SEWER
EA	EAST	-SAN-	SANITARY SEWER
EC	EACH	SPEC	SPECIFICATIONS OR SPECIFIED
EL	ELECTRICAL CONTRACTOR	ST'L	STEEL
ELEV	ELEVATION	SQ	SQUARE
EAP	EXPOSED AGGREGATE PAVING	SF	SQUARE FOOT
EVC	END OF VERTICAL CURVE	SY	SQUARE YARD
ENGR	ENGINEER	STA	STATION
EX	EXISTING	S/S	STAINLESS STEEL
EXP	EXPANSION	-T-	TELEPHONE
EW	END WALL	T	TANGENT
ES	END SECTION	TC	TOP OF CURB
FFE	FINISHED FLOOR ELEVATION	TE	TAPERED END
FG	FINISHED GRADE	TEP	TERRA-COTTA PIPE
FIN	FINISH	T&G	TONGUE AND GROOVE
FL	FLOOR	TW	TOP OF WALL
FH	FIRE HYDRANT	TS	TOP OF SLOPE
FL	FLOW LINE	TWP	TOWNSHIP
FSD	FULL-SIZED DETAIL	TYP	TYPICAL
FTG	FOOTING	UD	UNDERDRAIN
FT	FOOT OR FEET	USGS	US GEOLOGICAL SURVEY
GA	GAUGE	VC	VERTICAL CURVE
-G-	GAS	VAR	VARIABLE
GAL	GALLON	VERT	VERTICAL
GALV	GALVANIZED	VCP	VITRIFIED CLAY PIPE
GC	GENERAL CONTRACTOR	-W-	WATER
GR	GUARD RAIL	W	WEST
GD	GRADE	W/	WITH
GV	GAS VALVE	W/O	WITHOUT
HB	HOSE BIB	WWM	WOVEN WIRE MESH
HW	HEAD WALL	WV	WATER VALVE
HP	HIGH POINT	YD	YARD DRAIN
HT	HEIGHT		
HOR	HORIZONTAL	Ø	ROUND DIAMETER
HWY	HIGHWAY	AT	AT
ID	INSIDE DIAMETER	'	FEET
IN	INCH	"	INCHES
INL	INLET	#	NUMBER
INV	INVERT	1#	POUND
JB	JUNCTION BOX		
L	LENGTH OF CURVE		
LAT	LATITUDE		

UTILITY INFORMATION:

CONTRACTOR SHALL HAVE ALL EXISTING BURIED UTILITIES "LINE SPOTTED" BY CALLING 1-800-292-8525 "ALABAMA ONE-CALL" OR BY CONTACTING LOCAL UTILITY COMPANIES.

WATER, SEWER, GAS AND POWER: FAIRHOPE PUBLIC UTILITIES
555 SOUTH SECTION STREET
FAIRHOPE, ALABAMA 36533
251.928.8003

WATER AND SEWER: DAN McCORRY

GAS: ROBERT ROHM

POWER: SCOTT SLUGH

TELEPHONE: AT&T
2001 MAIN STREET
DAPHNE, ALABAMA 36526
251.626.2913

NOTE: NO CONSTRUCTION AND/OR LAND DISTURBANCE, EXCEPT THOSE NECESSARY TO INSTALL THE BMP'S, SHALL BEGIN ON THIS PROJECT UNTIL THE BMP PLAN HAS BEEN INSTALLED AND APPROVED BY THE CITY/COUNTY.

PERRY C. JINRIGHT, III, P.E.
ALA. LIC. NO. 25748

DATE

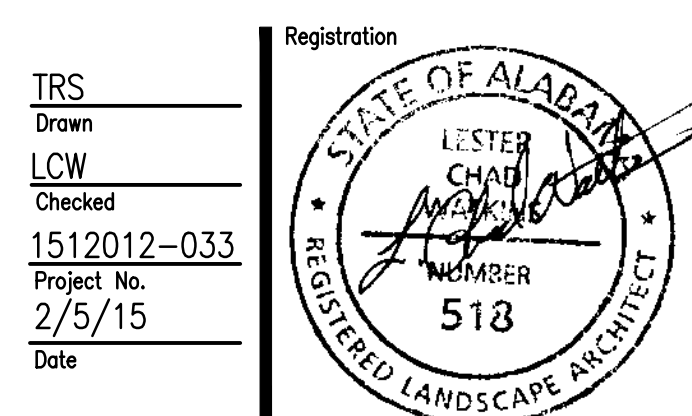


NOT FOR CONSTRUCTION
THESE PLANS HAVE NOT BEEN APPROVED
BY THE GOVERNING AGENCY
AND ARE SUBJECT TO CHANGE.



Improvements to
Fairhope Tennis Addition
Fairhope, Alabama

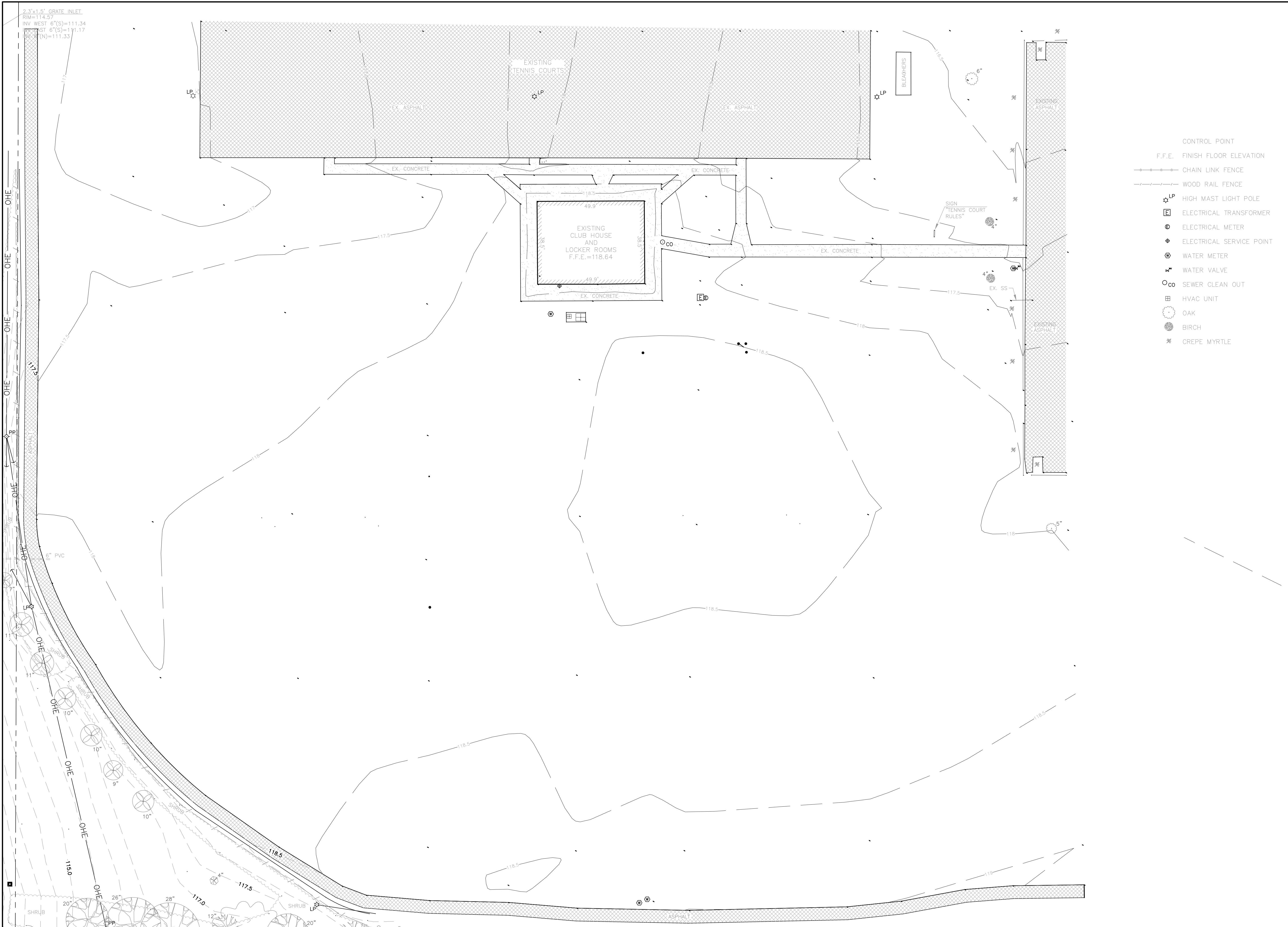
Revisions		
No.	Date	Revisions / Submissions
05.07.15		90% CD
07.10.15		ISSUED FOR BID



Sheet Title

COVER SHEET

Sheet No.
LC



1 EXISTING CONDITIONS
Scale: 1" = 20'

- CONTROL POINT
- F.F.E. FINISH FLOOR ELEVATION
- CHAIN LINK FENCE
- WOOD RAIL FENCE
- ☆ LP HIGH MAST LIGHT POLE
- ⊞ ELECTRICAL TRANSFORMER
- ⊙ ELECTRICAL METER
- ⊕ ELECTRICAL SERVICE POINT
- ⊙ WATER METER
- ⊙ WATER VALVE
- ⊙ CO SEWER CLEAN OUT
- ⊞ HVAC UNIT
- OAK
- BIRCH
- ✱ CREPE MYRTLE

NOT FOR CONSTRUCTION
THESE PLANS HAVE NOT BEEN APPROVED
BY THE GOVERNING AGENCY
AND ARE SUBJECT TO CHANGE.



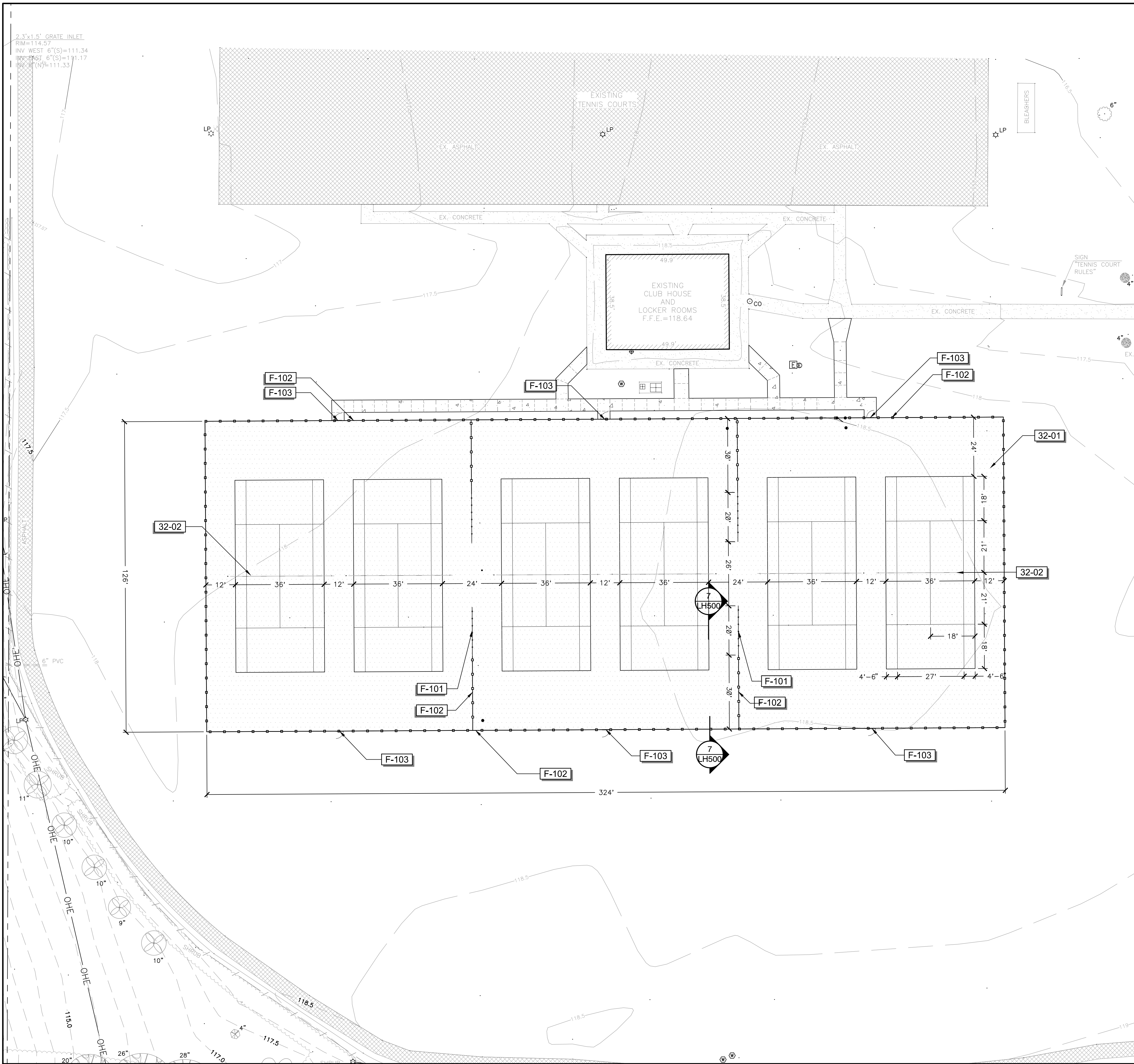
Improvements to
Stimpson Park Tennis Courts
 Fairhope, Alabama

Revisions	
No.	Date
05.07.15	90% CD
07.10.15	ISSUED FOR BID

Drawn LCW	
Checked 1512012-033	
Project No. 2/5/15	
Date	

Sheet Title
EXISTING CONDITIONS

Sheet No.
CV100



1 ASPHALT COURT PLAN
Scale: 1" = 20'

REFERENCE NOTES SCHEDULE

SYMBOL	DESCRIPTION	QTY	DETAIL
03	CONCRETE		
03-01	5' CONCRETE SIDEWALK	1,627 sf	9/LH500
32	EXTERIOR IMPROVEMENTS		
32-01	ASPHALT ATHLETIC SURFACING	40,824 sf	1/LH501
32-02	ASPHALT POST & NET ASSEMBLY, EQUAL TO OR BETTER THAN EDWARDS 40LS.	6	3/LH500
FENCE			
F-101	4' COATED CHAINLINK FENCE	80 lf	4/LH500
F-102	10' COATED CHAINLINK FENCE	1,020 lf	1/LH500
F-103	7' GATE	6	1/LH500



NOT FOR CONSTRUCTION
THESE PLANS HAVE NOT BEEN APPROVED BY THE GOVERNING AGENCY AND ARE SUBJECT TO CHANGE.



Improvements to
Stimpson Park Tennis Courts
 Fairhope, Alabama

Revisions

No.	Date	Revisions / Submissions
05.07.15		90% CD
07.10.15		ISSUED FOR BID

TRS _____
 Drawn _____
 LCW _____
 Checked _____
 1512012-033 _____
 Project No. _____
 2/5/15 _____
 Date _____

Sheet Title

ASPHALT COURT PLAN

Sheet No.

SP100

NOT FOR CONSTRUCTION
 THESE PLANS HAVE NOT BEEN APPROVED
 BY THE GOVERNING AGENCY
 AND ARE SUBJECT TO CHANGE.

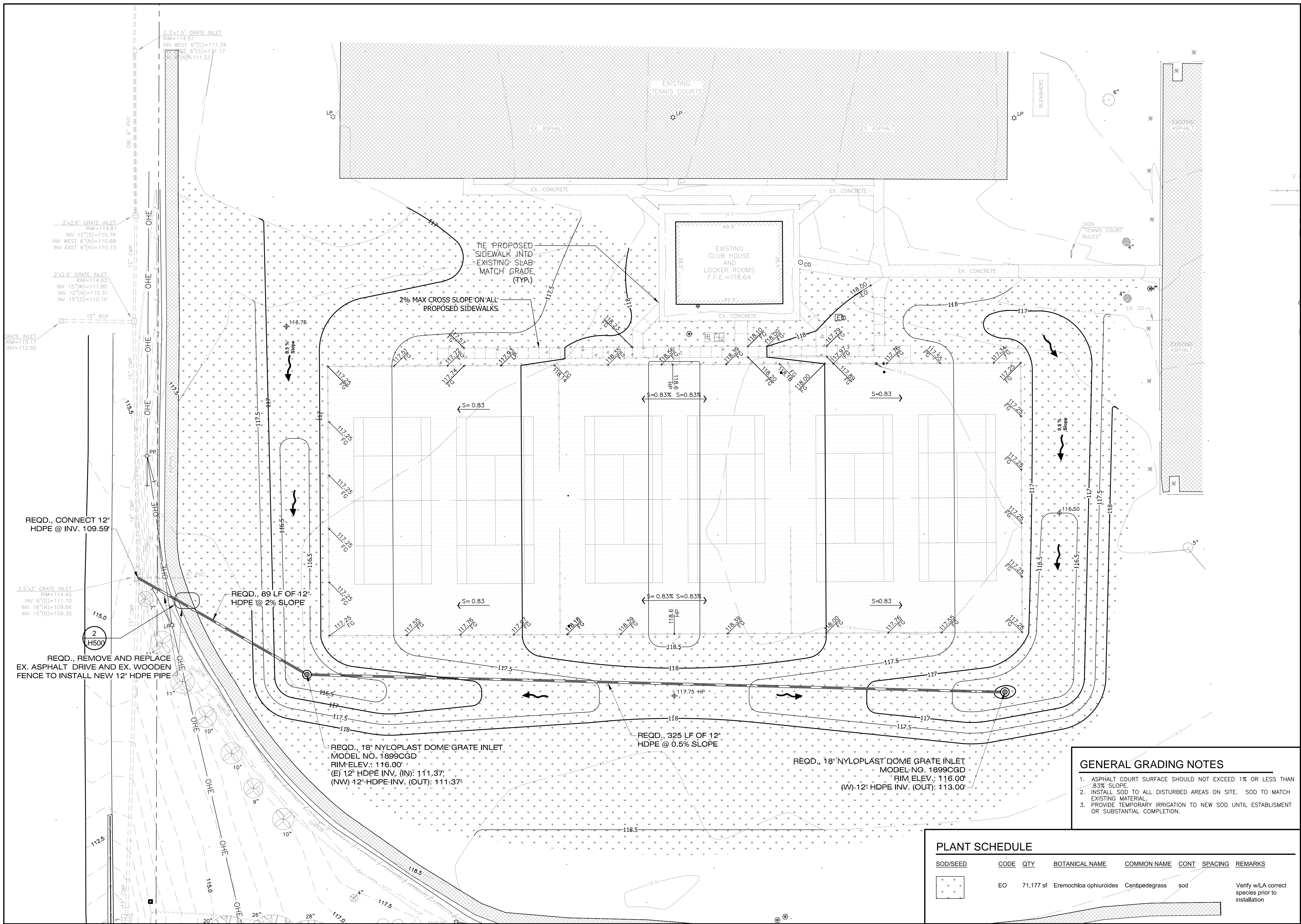
800.292.8225
 #TDC (toll-free)
 Dig Safely. **Alabama 1Call**

Improvements to
Stimpson Park Tennis Courts
 Fairhope, Alabama

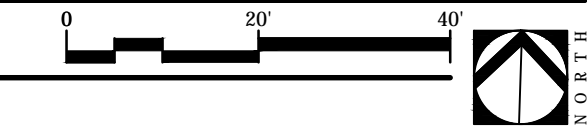
Revisions	
No.	Date
05.07.15	90% CD
07.10.15	ISSUED FOR BID

TRS
 Drawn
 LCW
 Checked
 1512012-033
 Project No.
 2/5/15
 Date

Registration
 STATE OF ALABAMA
 LESTER CHAD WATKINS
 REGISTERED LANDSCAPE ARCHITECT
 NUMBER 518

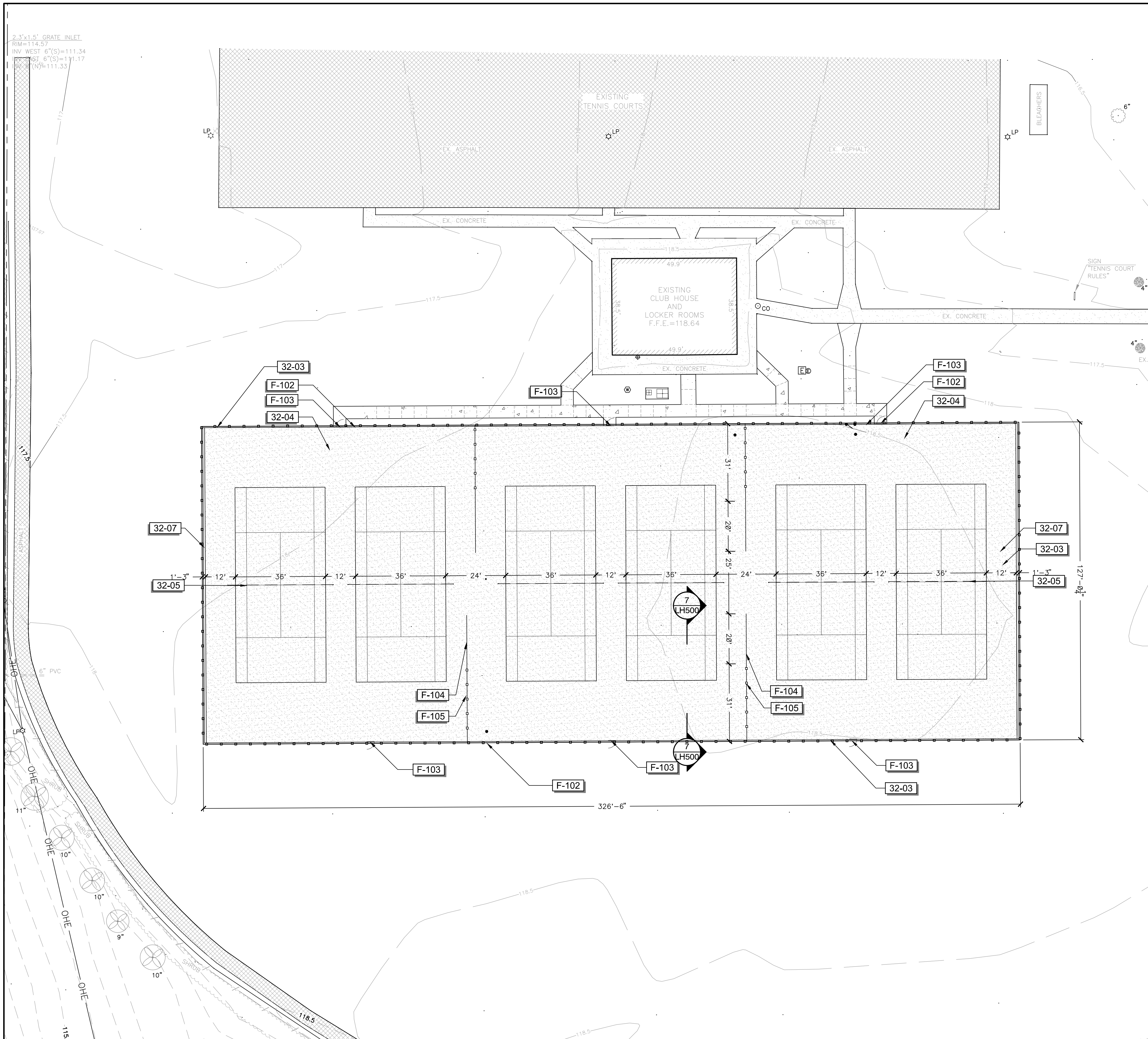


1 ASPHALT COURT PLAN
 Scale: 1" = 20'



ASPHALT COURT GRADING PLAN

Sheet No. **LG100**



REFERENCE NOTES SCHEDULE

SYMBOL	DESCRIPTION	QTY	DETAIL
03-01	5' CONCRETE SIDEWALK	1,627 sf	9/LH500
32 EXTERIOR IMPROVEMENTS			
SYMBOL	DESCRIPTION	QTY	DETAIL
32-03	6" CONCRETE CURB	905 lf	2/LH501
32-04	HYDROCOURT ATHLETIC SURFACING	40,832 sf	2/LH501
32-05	CLAY POST & NET ASSEMBLY, EQUAL TO OR BETTER THAN EDWARDS 40LS.	6	5/LH500
32-07	6" PRO SERIES TRENCH DRAIN	252 lf	8/LH500
SYMBOL	FENCE DESCRIPTION	QTY	DETAIL
F-102	10' COATED CHAINLINK FENCE	907 lf	1/LH500
F-103	7' GATE	6	1/LH500
F-104	4' COATED CHAINLINK FENCE ON CLAY	80 lf	6/LH500
F-105	10' COATED CHAINLINK FENCE ON CLAY	124 lf	



NOT FOR CONSTRUCTION
 THESE PLANS HAVE NOT BEEN APPROVED
 BY THE GOVERNING AGENCY
 AND ARE SUBJECT TO CHANGE.



Improvements to
Stimpson Park Tennis Courts
 Fairhope, Alabama

Revisions	
No.	Revisions / Submissions
05.07.15	90% CD
07.10.15	ISSUED FOR BID

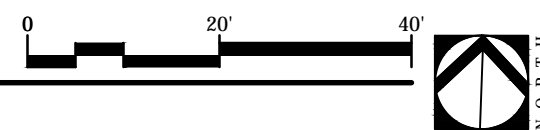
Registration
 TRS
 Drawn
 LCW
 Checked
 1512012-033
 Project No.
 2/5/15
 Date

Sheet Title

**HYDROCOURT
 PLAN**

Sheet No.

SP101



NOT FOR CONSTRUCTION
 THESE PLANS HAVE NOT BEEN APPROVED
 BY THE GOVERNING AGENCY
 AND ARE SUBJECT TO CHANGE.

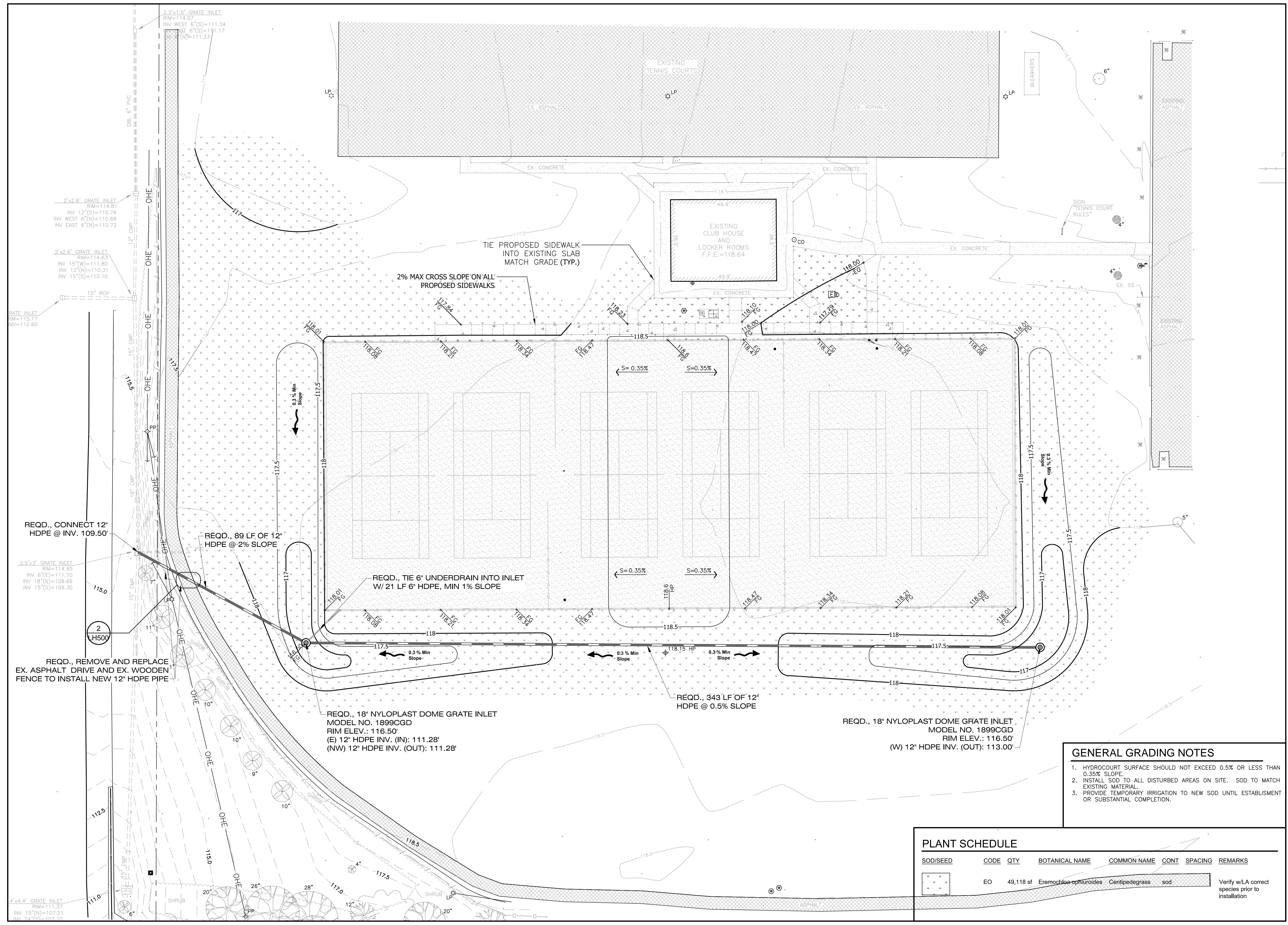
800.292.8225
 #TIC (toll-free)
 Dig Safely. **Alabama 1Call**

Improvements to
Stimpson Park Tennis Courts
 Fairhope, Alabama

Revisions	
No.	Date / Revisions / Submissions
05.07.15	90% CD
07.10.15	ISSUED FOR BID

TRS
 Drawn
 LCW
 Checked
 1512012-033
 Project No.
 2/5/15
 Date

Registration
 STATE OF ALABAMA
 LESTER CHAD WATKINS
 REGISTERED LANDSCAPE ARCHITECT
 NUMBER 518



GENERAL GRADING NOTES

- HYDROCOURT SURFACE SHOULD NOT EXCEED 0.5% OR LESS THAN 0.35% SLOPE.
- INSTALL SOD TO ALL DISTURBED AREAS ON SITE. SOD TO MATCH EXISTING MATERIAL.
- PROVIDE TEMPORARY IRRIGATION TO NEW SOD UNTIL ESTABLISHMENT OR SUBSTANTIAL COMPLETION.

PLANT SCHEDULE

SOD/SEED	CODE	QTY	BOTANICAL NAME	COMMON NAME	CONT	SPACING	REMARKS
[Symbol]	EO	49,118 sf	Eremochloa ophiuroides	Centipedegrass	sod		Verify w/LA correct species prior to installation

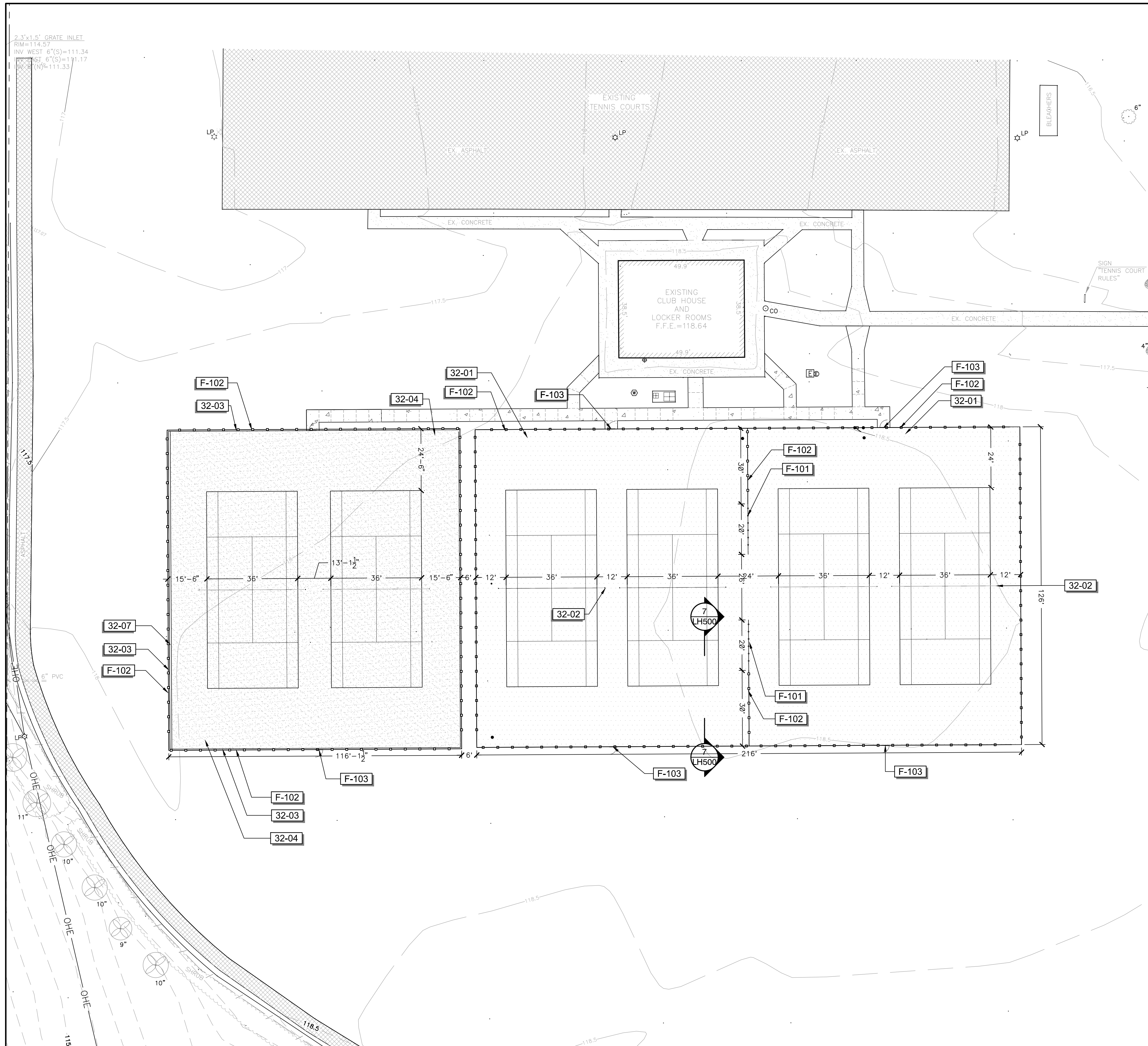
1 HYDROCOURT PLAN
 Scale: 1" = 20'

Sheet Title

HYDROCOURT GRADING PLAN

Sheet No.

LG101



REFERENCE NOTES SCHEDULE

SYMBOL	DESCRIPTION	QTY	DETAIL
03	CONCRETE		
03-01	5' CONCRETE SIDEWALK	1,679 sf	9/LH500
32 EXTERIOR IMPROVEMENTS			
SYMBOL	DESCRIPTION	QTY	DETAIL
32-01	ASPHALT ATHLETIC SURFACING	27,216 sf	1/LH501
32-02	ASPHALT POST & NET ASSEMBLY, EQUAL TO OR BETTER THAN EDWARDS 40LS,	4	3/LH500
32-03	6" CONCRETE CURB	484 lf	2/LH501
32-04	HYDROCOURT ATHLETIC SURFACING	14,412 sf	2/LH501
32-05	CLAY POST & NET ASSEMBLY, EQUAL TO OR BETTER THAN EDWARDS 40LS,	2	5/LH500
32-07	6" PRO SERIES TRENCH DRAIN	126 lf	8/LH500
FENCE			
SYMBOL	DESCRIPTION	QTY	DETAIL
F-101	4' COATED CHAINLINK FENCE	40 lf	4/LH500
F-102	10' COATED CHAINLINK FENCE	1,222 lf	1/LH500
F-103	7' GATE	6	1/LH500



NOT FOR CONSTRUCTION
 THESE PLANS HAVE NOT BEEN APPROVED
 BY THE GOVERNING AGENCY
 AND ARE SUBJECT TO CHANGE.



Improvements to
Stimpson Park Tennis Courts
 Fairhope, Alabama

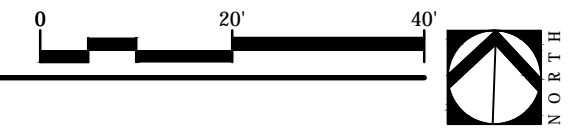
Revisions	
No.	Date / Revisions / Submissions
05.07.15	90% CD
07.10.15	ISSUED FOR BID

Drawn	LCW
Checked	
Project No.	1512012-033
Date	2/5/15

STATE OF ALABAMA
 REGISTERED LANDSCAPE ARCHITECT
 LESTER CHATMAN
 MEMBER
 518

Sheet Title

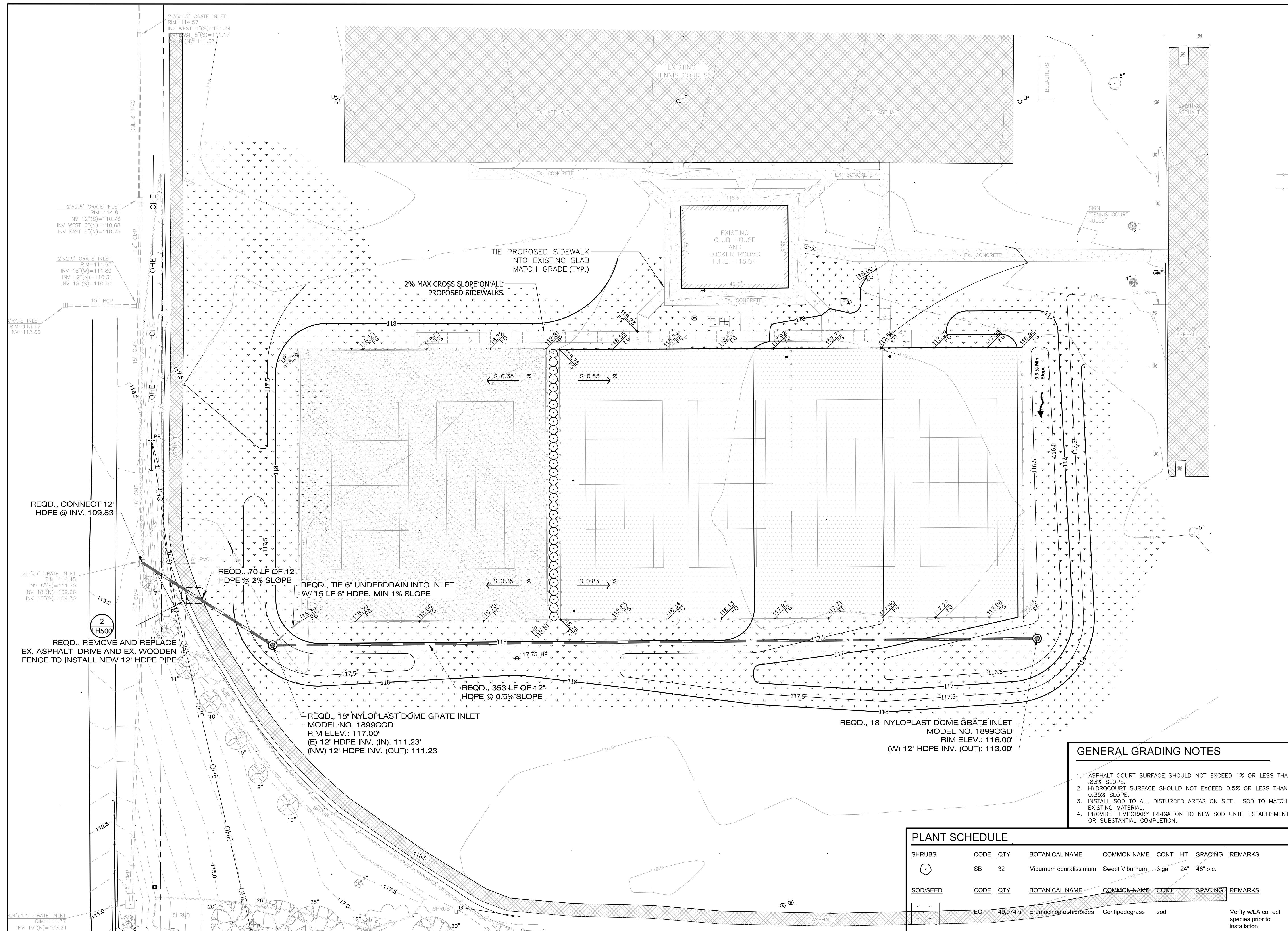
HYDROCOURT & ASPHALT PLAN



NOT FOR CONSTRUCTION
 THESE PLANS HAVE NOT BEEN APPROVED
 BY THE GOVERNING AGENCY
 AND ARE SUBJECT TO CHANGE.

800.292.8225
 #TIC (tollfree)
 Dig Safely. **Alabama 1Call**

Improvements to
Stimpson Park Tennis Courts
 Fairhope, Alabama



GENERAL GRADING NOTES

1. ASPHALT COURT SURFACE SHOULD NOT EXCEED 1% OR LESS THAN .83% SLOPE.
2. HYDROCOURT SURFACE SHOULD NOT EXCEED 0.5% OR LESS THAN 0.35% SLOPE.
3. INSTALL SOD TO ALL DISTURBED AREAS ON SITE. SOD TO MATCH EXISTING MATERIAL.
4. PROVIDE TEMPORARY IRRIGATION TO NEW SOD UNTIL ESTABLISHMENT OR SUBSTANTIAL COMPLETION.

PLANT SCHEDULE

SHRUBS	CODE	QTY	BOTANICAL NAME	COMMON NAME	CONT	HT	SPACING	REMARKS
(Symbol)	SB	32	Viburnum odoratissimum	Sweet Viburnum	3 gal	24"	48" o.c.	
SOD/SEED	CODE	QTY	BOTANICAL NAME	COMMON NAME	CONT	SPACING	REMARKS	
(Symbol)	EO	49,074 sf	Eremochloa ophiuroides	Centipedegrass	sod			Verify w/LA correct species prior to installation

Revisions

No.	Date	Revisions / Submissions
05.07.15	90% CD	
07.10.15	ISSUED FOR BID	

Registration
 TRS
 Drawn
 LCW
 Checked
 1512012-033
 Project No.
 2/5/15
 Date

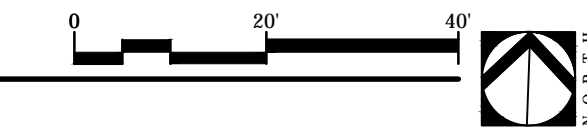
STATE OF ALABAMA
 LESTER CHAD WATKINS
 REGISTERED LANDSCAPE ARCHITECT
 NUMBER 518

Sheet Title

HYDROCOURT & ASPHALT COURT GRADING PLAN

Sheet No.

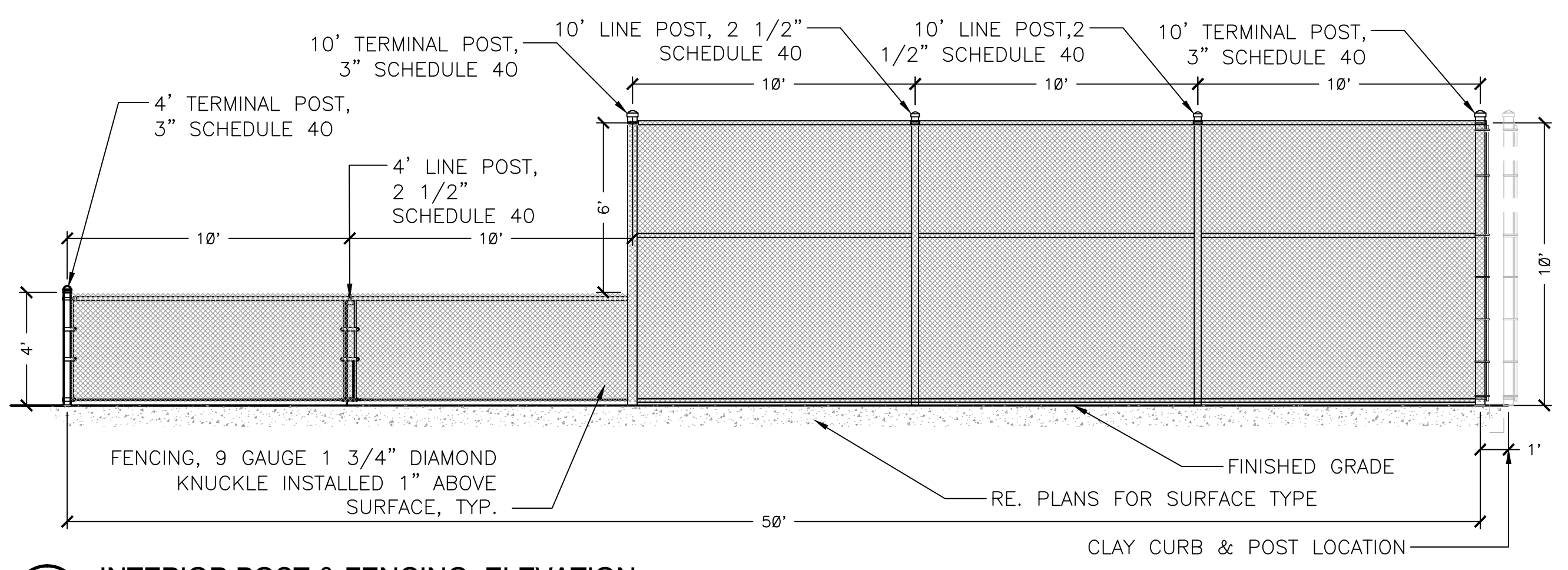
LG102



NOT FOR CONSTRUCTION
 THESE PLANS HAVE NOT BEEN APPROVED
 BY THE GOVERNING AGENCY
 AND ARE SUBJECT TO CHANGE.

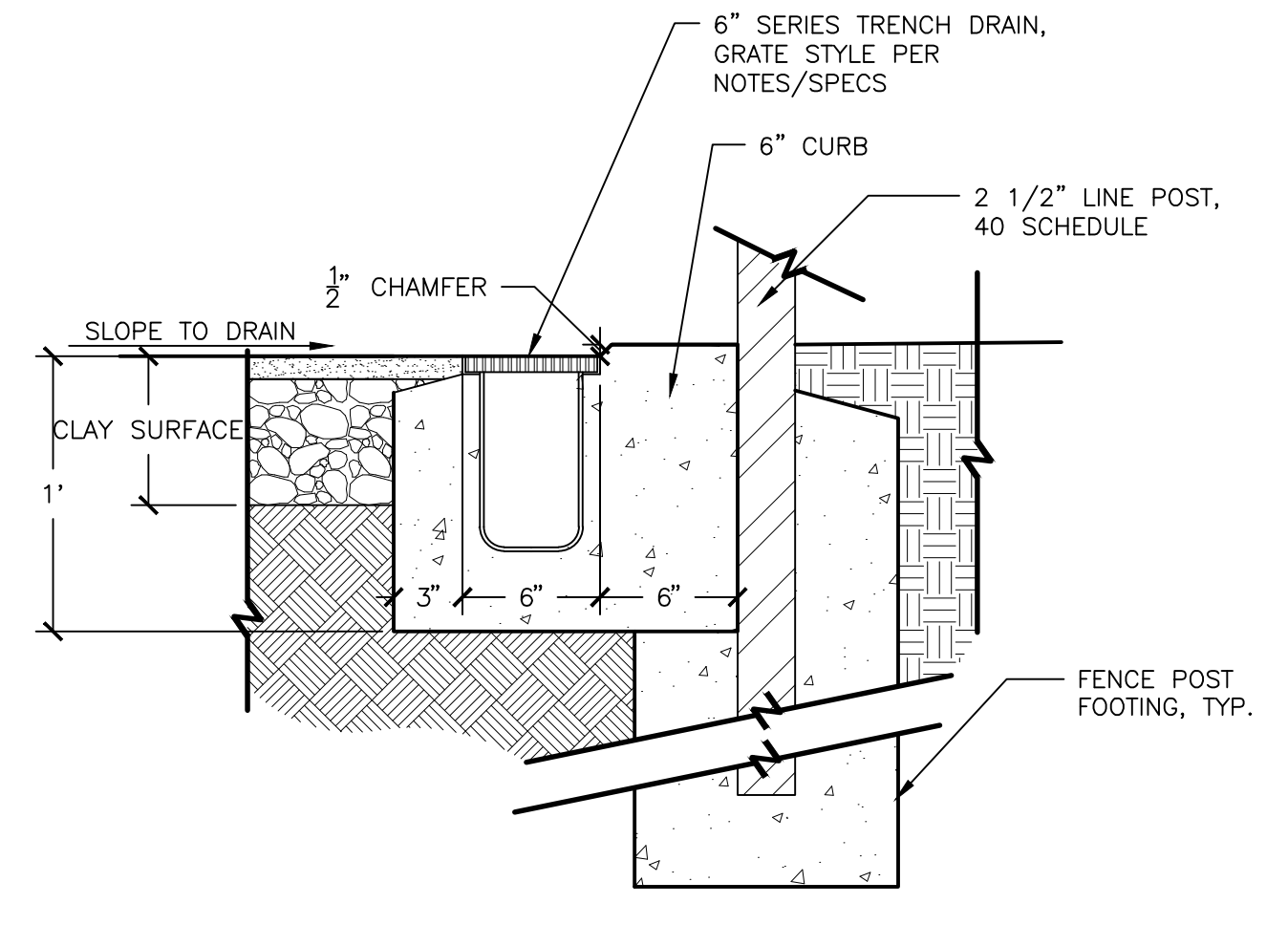
800.292.8225
 #TIC (tollfree)
 Dig Safely. **Alabama 1Call**

Improvements to
Stimpson Park Tennis Courts
 Fairhope, Alabama



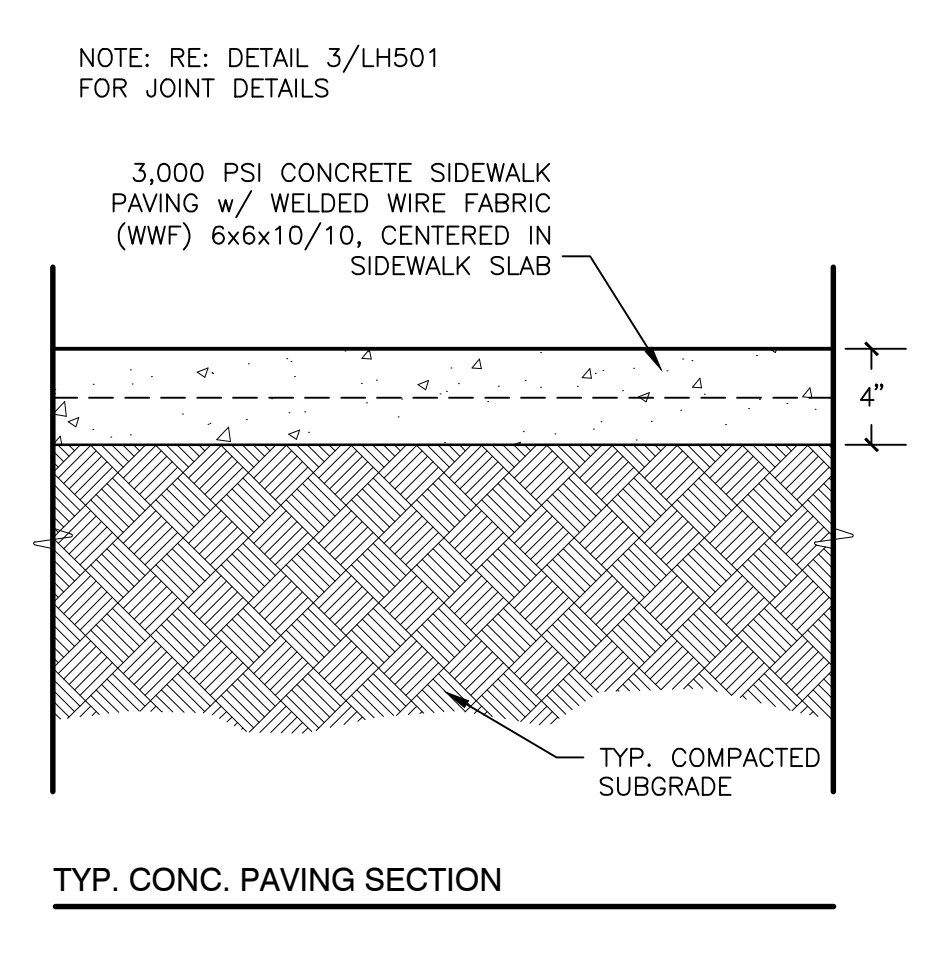
7 INTERIOR POST & FENCING ELEVATION
 1/4" = 1'-0"

321823.53-09



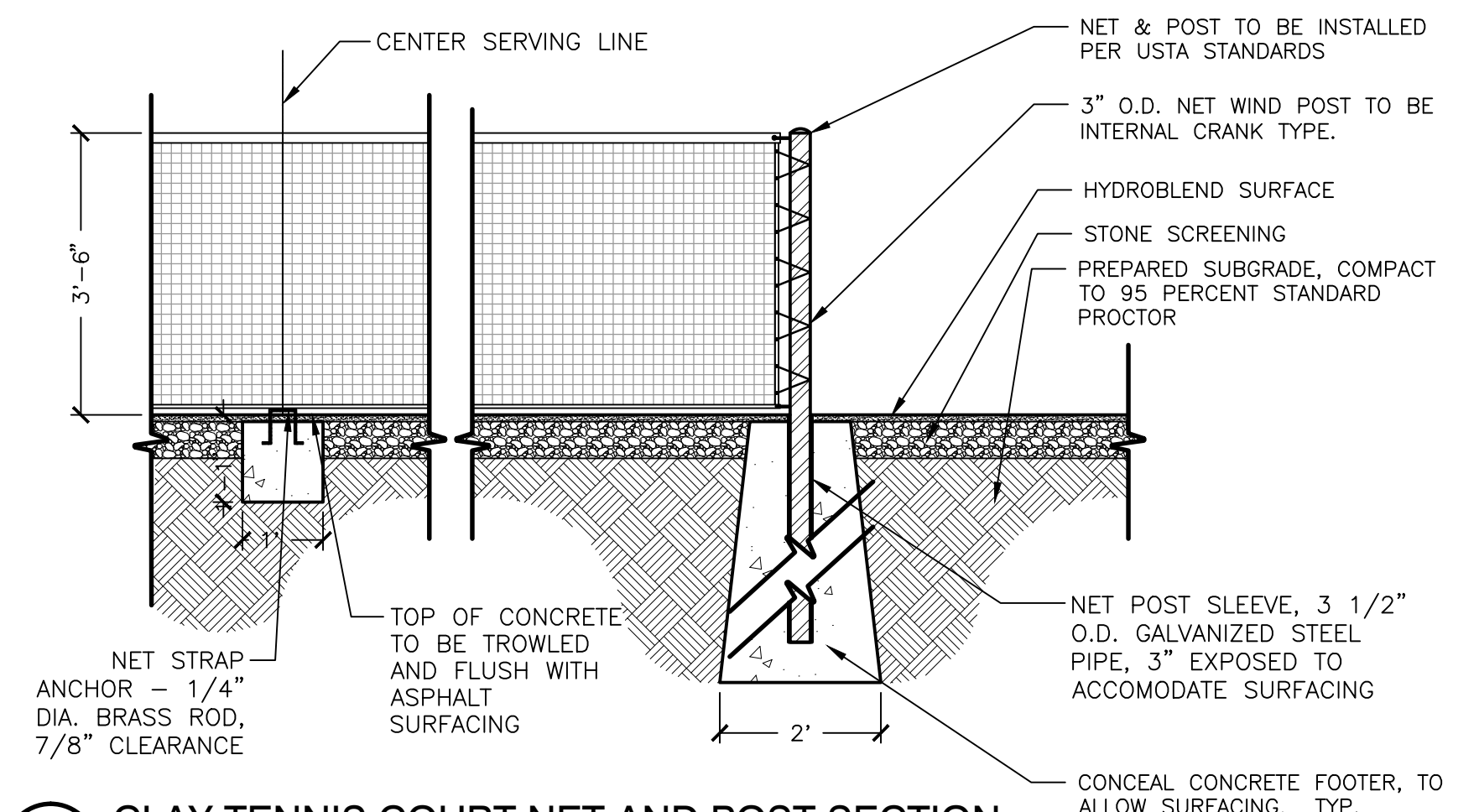
8 TRENCH DRAIN AT CLAY COURT
 1 1/2" = 1'-0"

321823.53-11



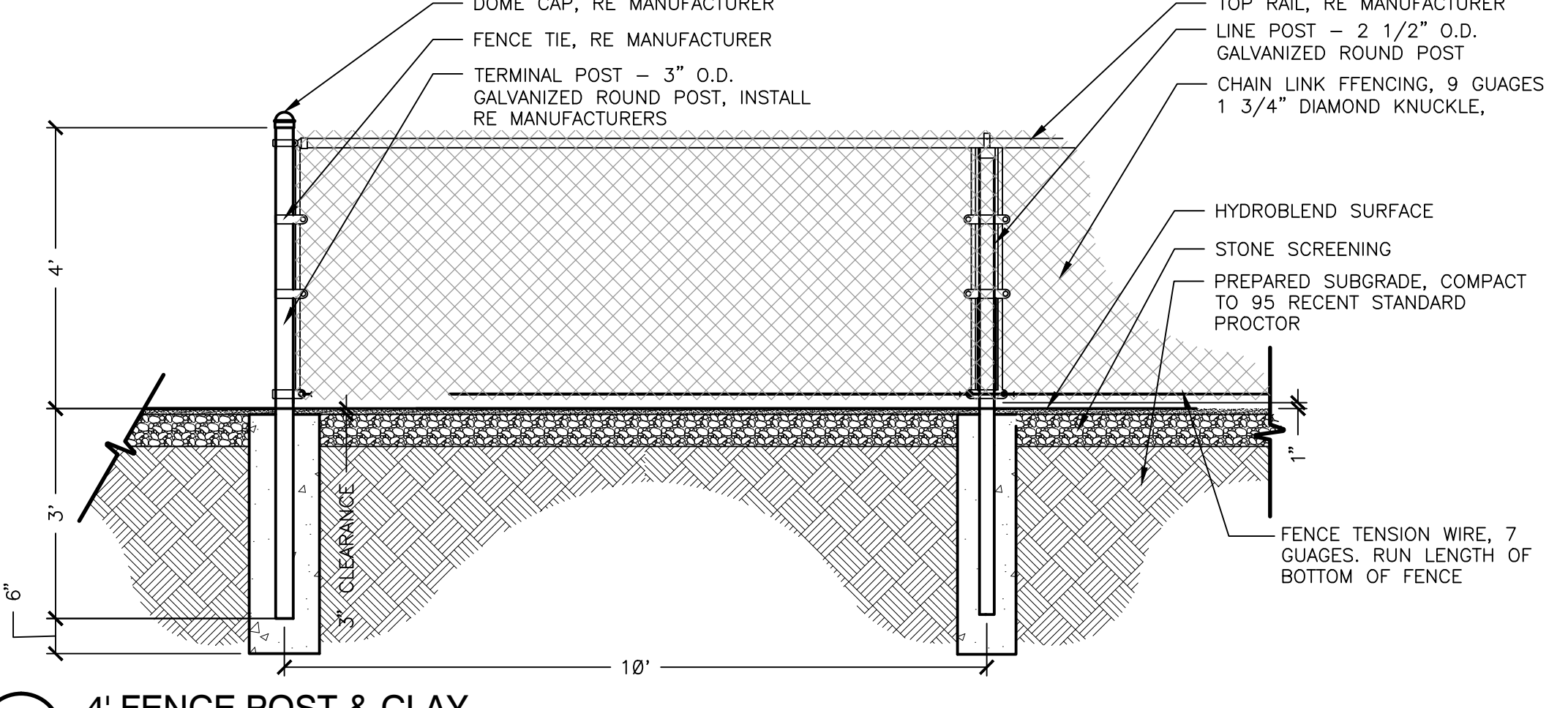
9 CONCRETE SIDEWALK DETAIL
 1 1/2" = 1'-0"

S-CP-CPC-01



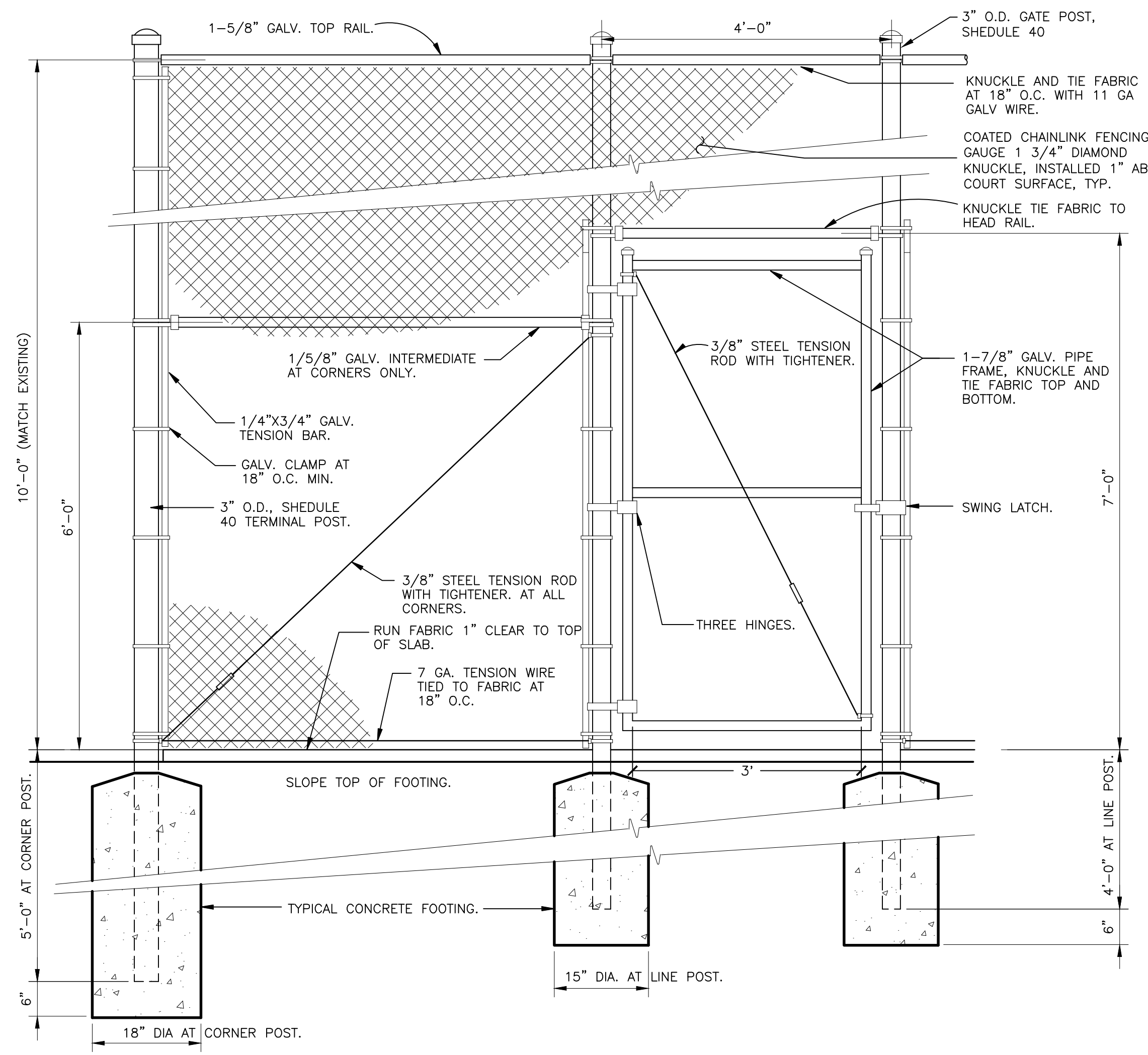
5 CLAY TENNIS COURT NET AND POST SECTION
 1/2" = 1'-0"

321823.53-07



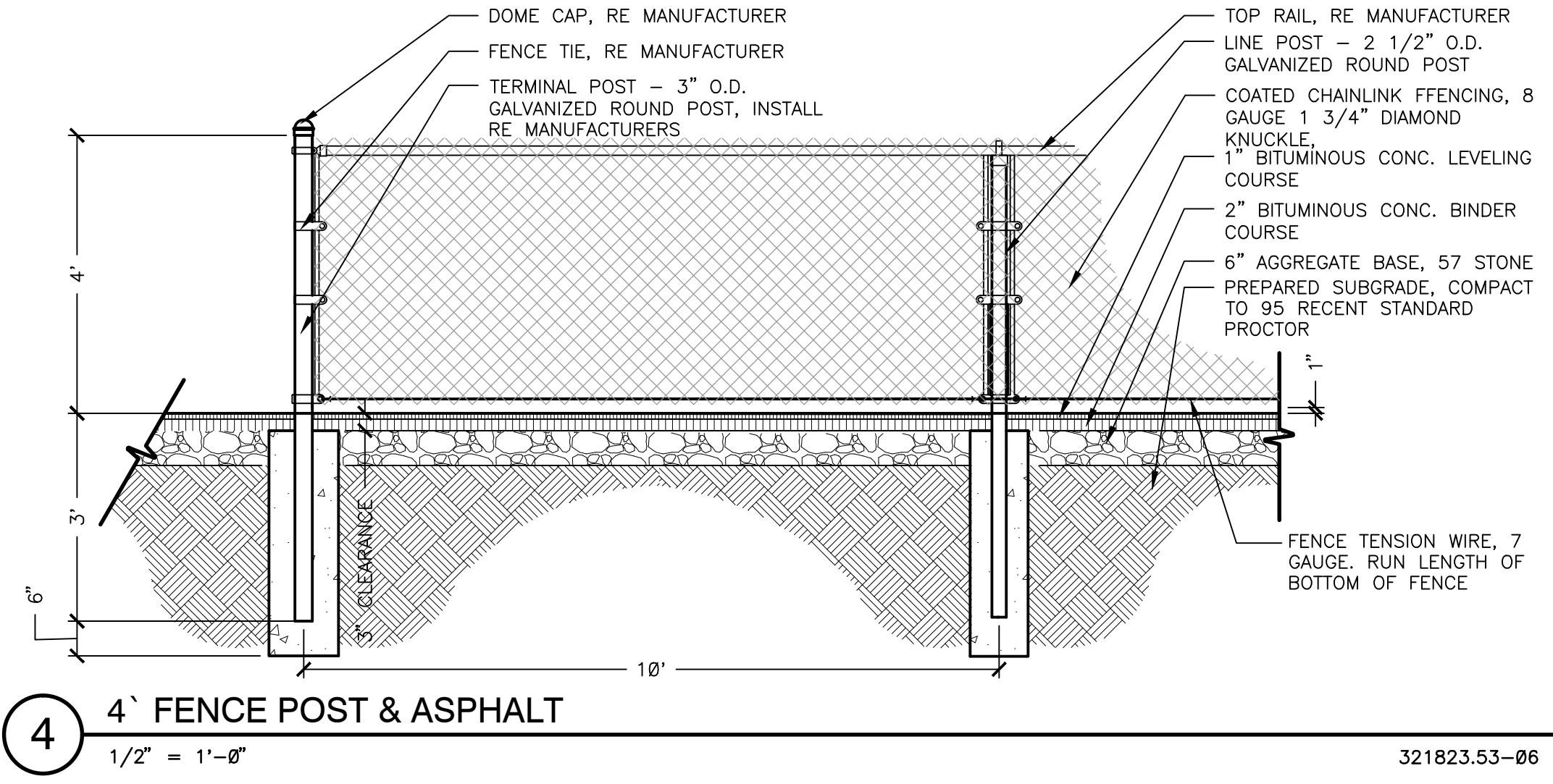
6 4' FENCE POST & CLAY
 1/2" = 1'-0"

321823.53-08



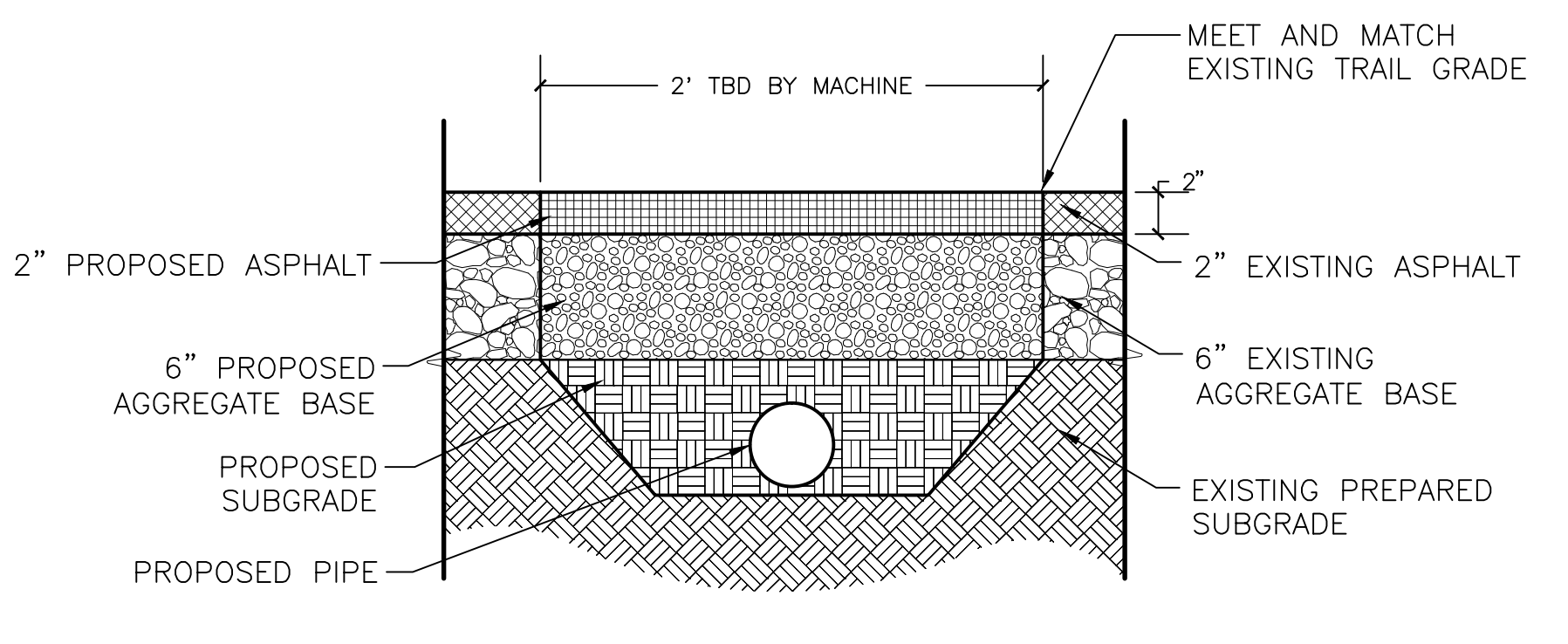
1 TYPICAL 10 FT CHAIN LINK FENCE WITH GATE
 3/4" = 1'-0"

323113-03



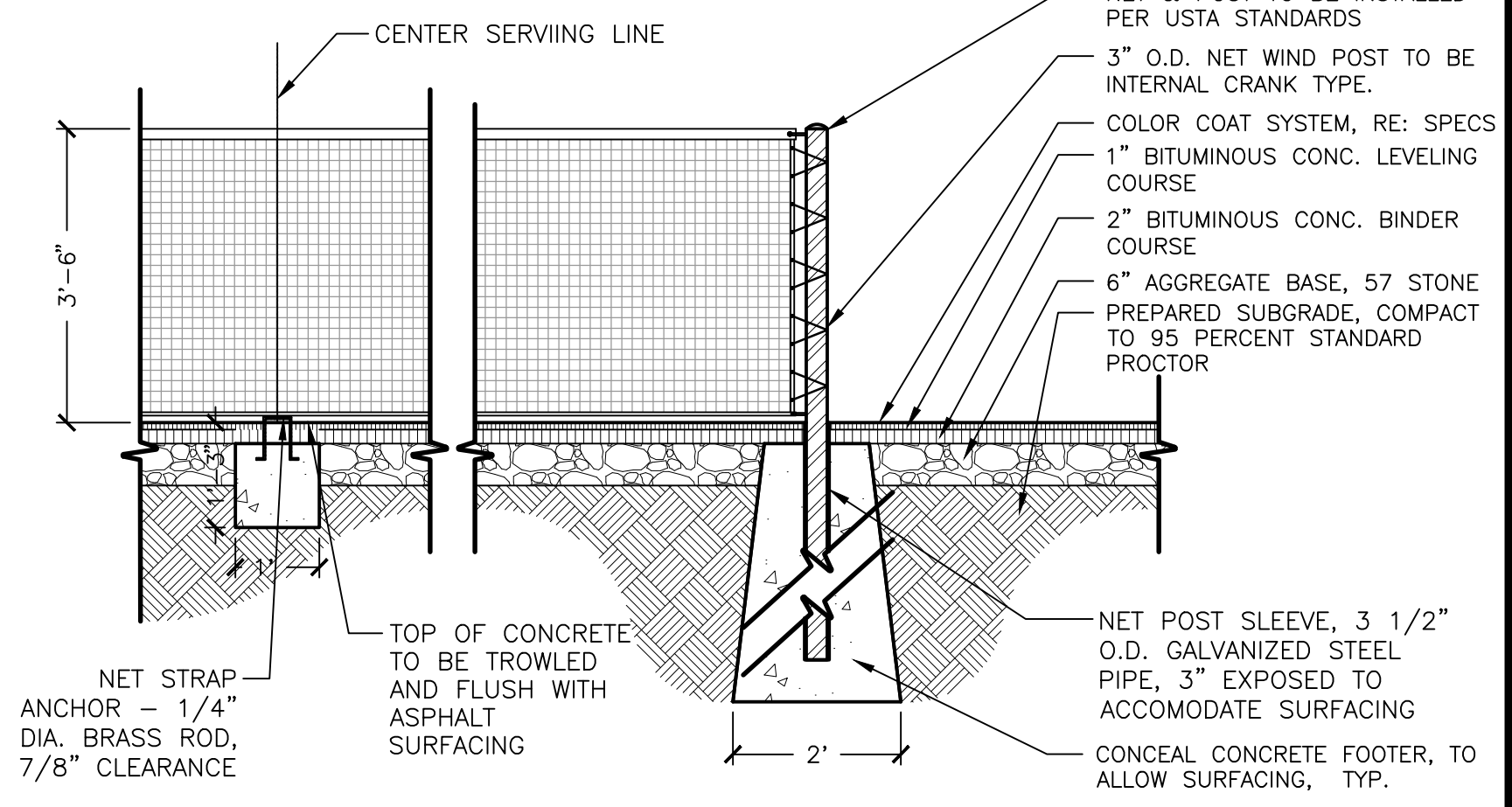
4 4' FENCE POST & ASPHALT
 1/2" = 1'-0"

321823.53-06



2 ASPHALT TRAIL PATCH
 1 1/2" = 1'-0"

S-CP-CPC-ASPH-01



3 ASPHALT TENNIS COURT NET AND POST SECTION
 1/2" = 1'-0"

321823.53-03

Revisions	
No.	Date
05.07.15	90% CD
07.10.15	ISSUED FOR BID

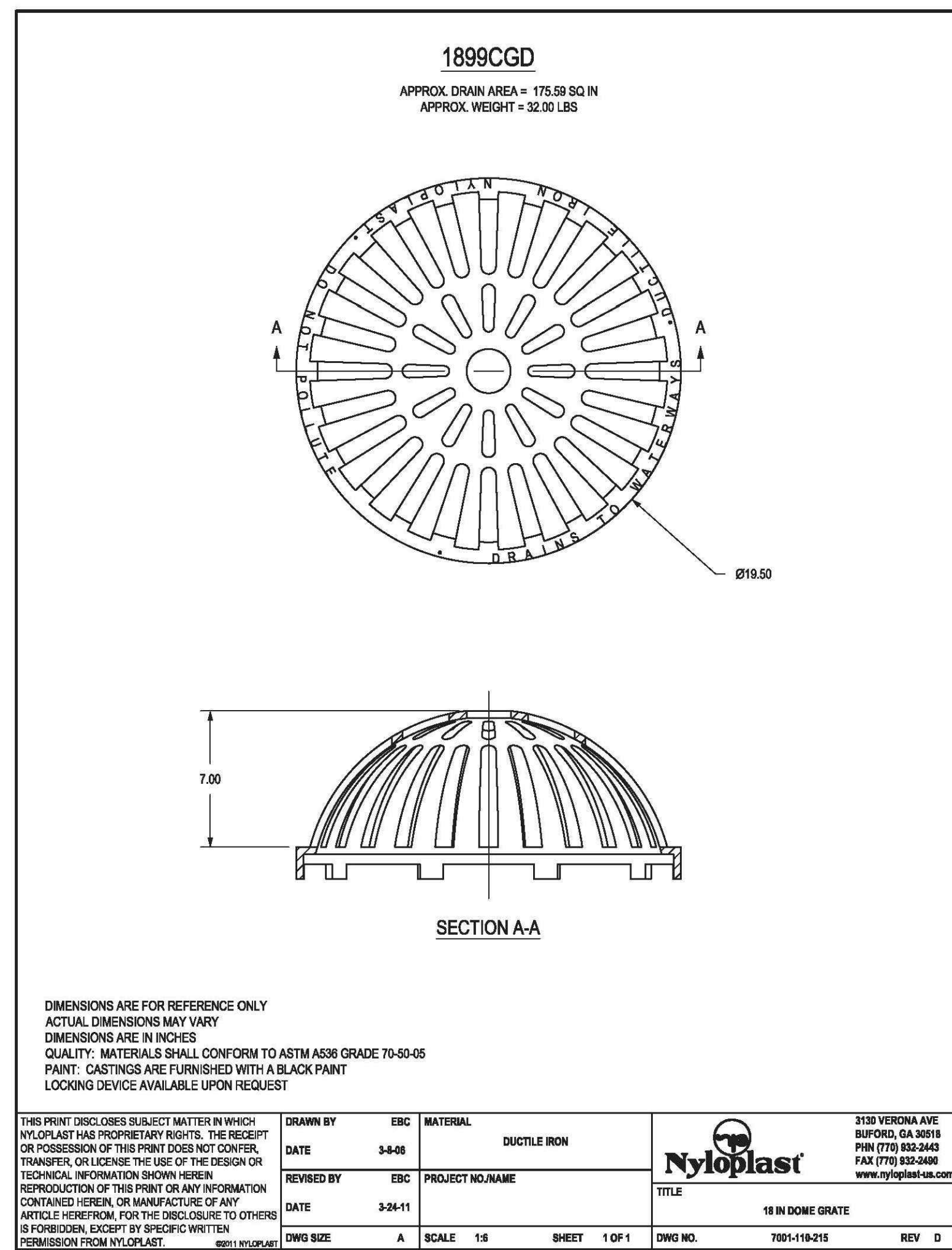
Registration
 TRS
 Drawn
 LCW
 Checked
 1512012-033
 Project No.
 2/5/15
 Date

STATE OF ALABAMA
 REGISTERED LANDSCAPE ARCHITECT
 LESTER CHAD WATKINS
 MEMBER
 518

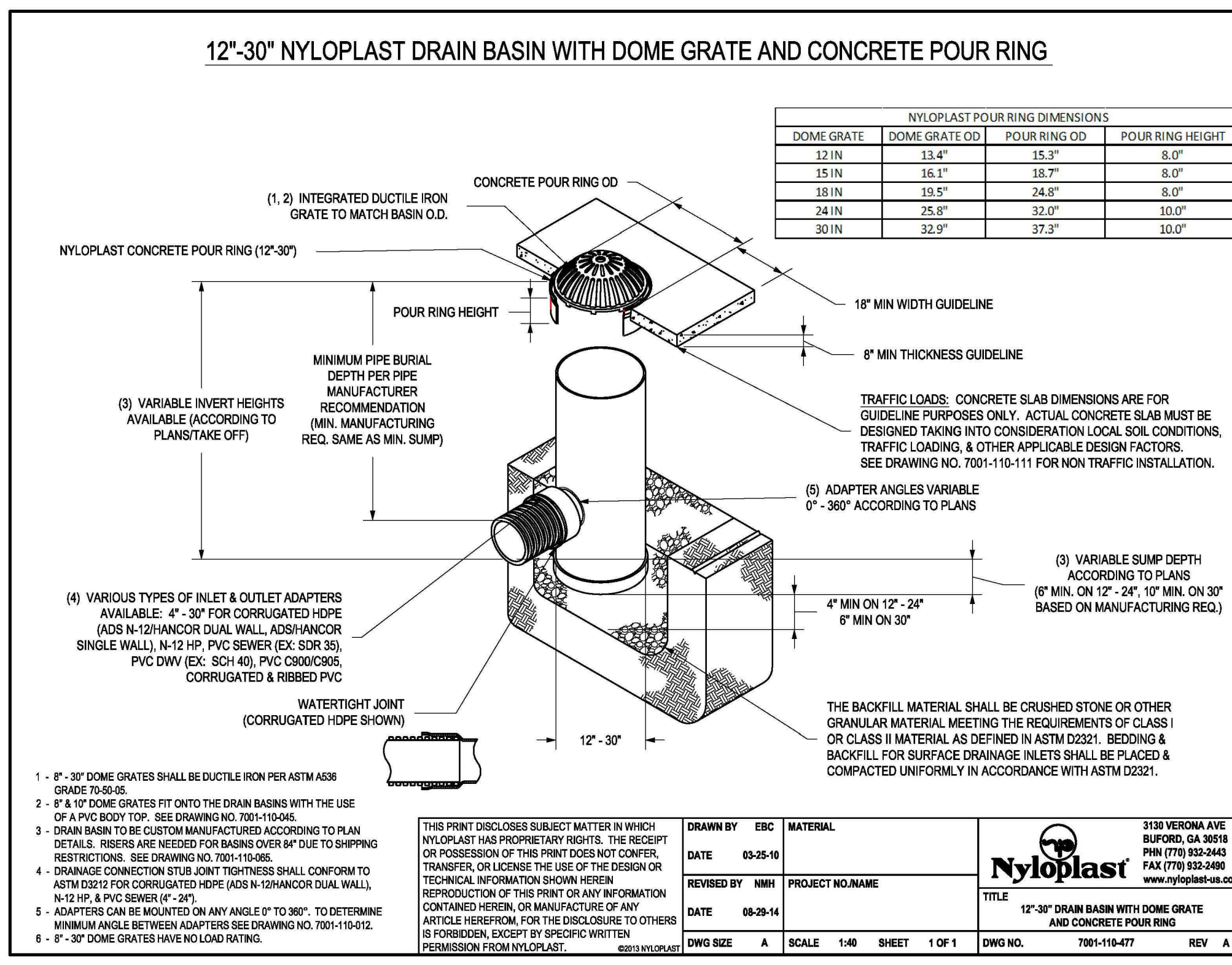
Sheet Title

HARDSCAPE DETAILS

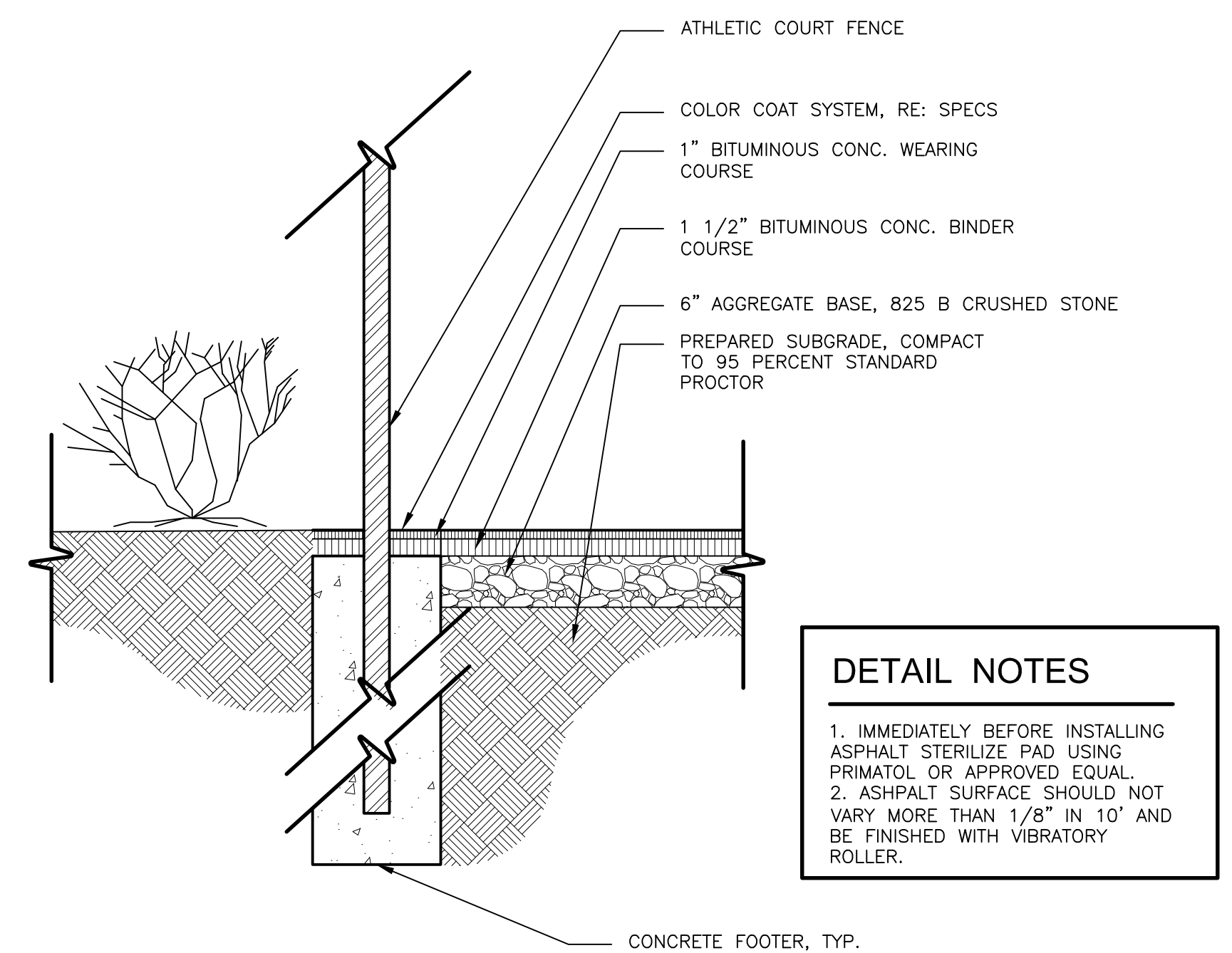
Sheet No. **LH500**



3 18 in Dome Grate Detail
NTS

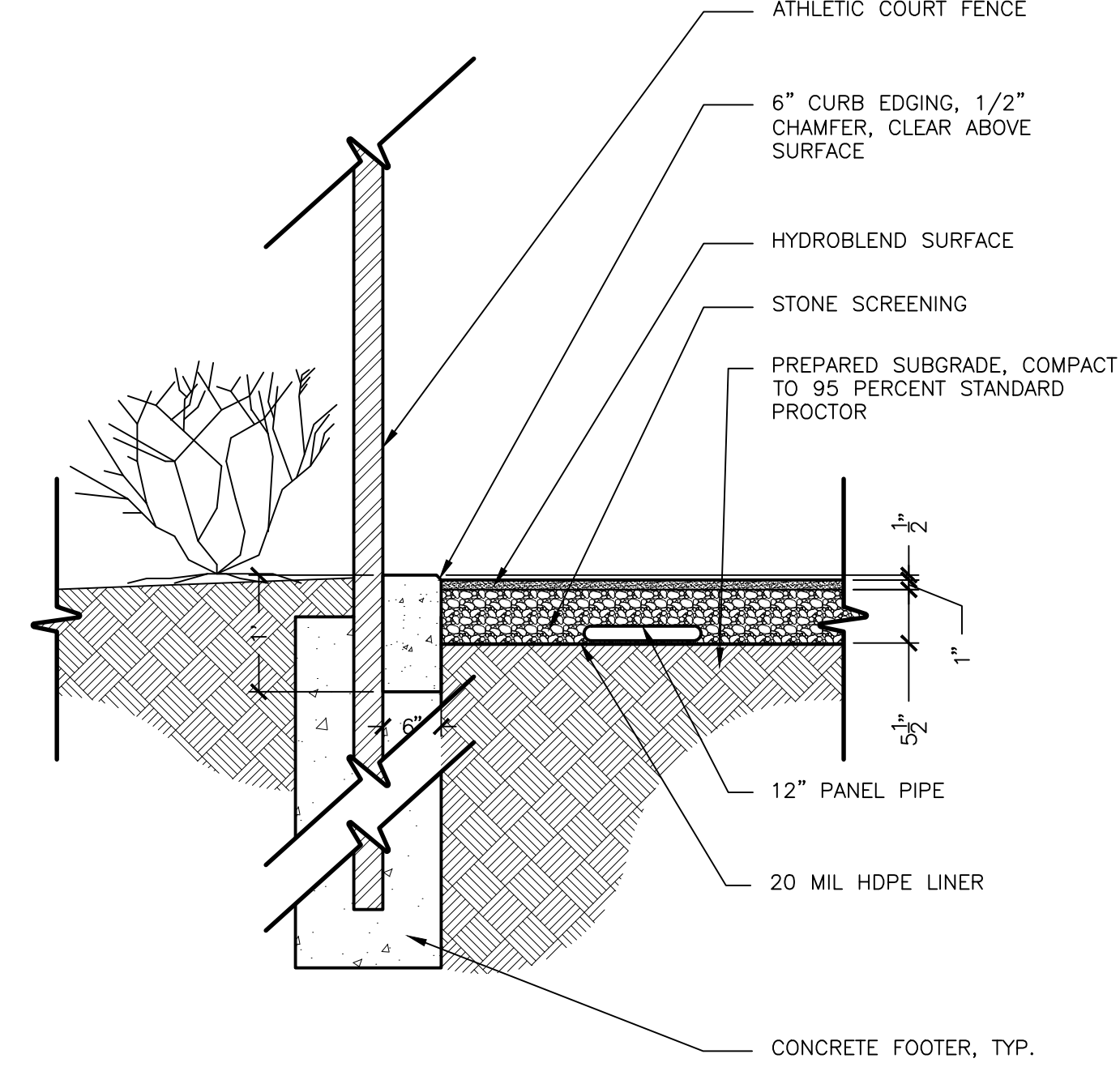


4 PVC Pour Ring for Domed Grates
NTS



1 ATHLETIC ASPHALT COURT SECTION
3/4" = 1'-0"

321823.53-01



2 ATHLETIC HYDROCOURT SECTION
3/4" = 1'-0"

321823.53-02

NOT FOR CONSTRUCTION
THESE PLANS HAVE NOT BEEN APPROVED
BY THE GOVERNING AGENCY
AND ARE SUBJECT TO CHANGE.

800.292.8225
419C (Alabama)
Dig Safely. **Alabama 1Call**

Improvements to
Stimpson Park Tennis Courts
Fairhope, Alabama

Revisions	
No.	Date
	Revisions / Submissions
05.07.15	90% CD
07.10.15	ISSUED FOR BID

Registration
TRC
Drawn
LCW
Checked
1512012-033
Project No.
2/5/15
Date

STATE OF ALABAMA
LESTER CHAD WATKINS
REGISTERED LANDSCAPE ARCHITECT
NUMBER
518

Sheet Title
**HARDSCAPE
DETAILS**

SOIL EROSION AND SEDIMENT CONTROL NOTES

1. ALL DRAINAGE SWALES MUST BE GRASSED AND RIP-RAP MUST BE PLACED AS SHOWN TO CONTROL EROSION.
2. SILT FENCE MUST MEET THE REQUIREMENTS OF LOCAL JURISDICTIONAL AGENCY, SAID REQUIREMENTS AS SHOWN BY THESE PLANS.
3. DISTURBED AREAS SHALL BE VEGETATED AFTER CONSTRUCTION.
4. ADDITIONAL EROSION CONTROL MEASURES OR SILT BARRIERS TO BE PLACED AS SHOWN AND/OR DIRECTED BY THE PROJECT LANDSCAPE ARCHITECT AND/OR CITY ENGINEER AND/OR CITY OF FAIRHOPE INSPECTOR.
5. AS CONSTRUCTION PROGRESSES, THE CONTRACTOR HEREBY AGREES TO STOP ALL WORK AND
6. RESTORE THESE AREAS IMMEDIATELY UPON NOTIFICATION BY THE LOCAL
7. JURISDICTIONAL INSPECTOR AND/OR PROFESSIONAL LANDSCAPE ARCHITECT AND OR CITY ENGINEER.
8. FOR ALL CONSTRUCTION ALONG AND/OR ACROSS WATERWAYS, BANK PROTECTION AND STABILIZATION SHALL BE REQUIRED AS PER LOCAL JURISDICTIONAL EROSION LAWS.
9. ALL EROSION CONTROL MEASURES SHALL BE IN PLACE PRIOR TO COMMENCING CONSTRUCTION AND SHALL BE MAINTAINED IN PROPER WORKING ORDER UNTIL ALL DISTURBED AREAS ARE STABILIZED. CONSTRUCTION ENTRANCE PADS SHALL BE INSTALLED BY THE CONTRACTOR AT CONSTRUCTION ACCESS POINTS PRIOR TO LAND DISTURBANCE AND SHALL BE MAINTAINED FOR THE DURATION OF THE PROJECT (NO DIRECT PAYMENT)
10. A COPY OF THE APPROVED LAND DISTURBANCE PLAN SHALL BE PRESENT ON THE SITE WHENEVER LAND DISTURBING ACTIVITY IS IN PROGRESS.
11. CONSTRUCT SILT FENCE ALONG THE DOWNSTREAM SIDE OF ALL PROPOSED FILL CONSTRUCTION.
12. EROSION CONTROL DEVICES SHALL BE INSTALLED IMMEDIATELY AFTER GROUND DISTURBANCE OCCURS. THE LOCATION OF SOME OF THE EROSION CONTROL DEVICES MAY HAVE TO BE ALTERED FROM THAT SHOWN ON THE APPROVED PLANS IF DRAINAGE PATTERNS DURING CONSTRUCTION ARE DIFFERENT FROM THE FINAL PROPOSED DRAINAGE PATTERNS. IT IS THE CONTRACTOR'S RESPONSIBILITY TO ACCOMPLISH EROSION CONTROL FOR ALL DRAINAGE PATTERNS CREATED AT VARIOUS STAGES DURING CONSTRUCTION. ANY DIFFICULTY IN CONTROLLING EROSION DURING ANY PHASE OF CONSTRUCTION SHALL BE REPORTED TO THE LANDSCAPE ARCHITECT AND OR CITY ENGINEER IMMEDIATELY.
13. CONTRACTOR SHALL MAINTAIN ALL EROSION CONTROL MEASURES UNTIL PERMANENT VEGETATION HAS BEEN ESTABLISHED. CONTRACTOR SHALL CLEAN OUT ALL SEDIMENT PONDS WHEN REQUIRED BY THE LANDSCAPE ARCHITECT AND OR CITY ENGINEER OR LOCAL JURISDICTIONAL INSPECTOR. CONTRACTOR SHALL INSPECT EROSION CONTROL MEASURES AT THE END OF EACH WORKING DAY TO ENSURE MEASURES ARE FUNCTIONING PROPERLY.
14. THE CONTRACTOR SHALL REMOVE ACCUMULATED SILT WHEN THE SILT IS WITHIN 12" OF THE TOP OF THE SILT FENCE UTILIZED FOR EROSION CONTROL. IN THE DETENTION POND, SILT SHALL BE REMOVED WHEN A DEPTH OF 18" HAS ACCUMULATED AT THE WEIR.
15. SILT BARRIERS TO BE PLACED AT DOWNSTREAM TOE OF ALL CUT AND FILL SLOPES.
16. THE CONTRACTOR SHALL FURNISH AND MAINTAIN ALL NECESSARY BARRICADES AROUND THE WORK AND SHALL PROVIDE PROTECTION AGAINST WATER DAMAGE AND SOIL EROSION.
17. TREE PROTECTION AND EROSION CONTROL MEASURES ARE TO BE ACCOMPLISHED PRIOR TO ANY OTHER CONSTRUCTION ON THE SITE AND MAINTAINED UNTIL PERMANENT GROUND COVER IS ESTABLISHED.
18. ALL SILT BARRIERS MUST BE PLACED AS ACCESS IS OBTAINED DURING CLEARING. NO GRADING SHALL BE DONE UNTIL SILT BARRIER AND DETENTION FACILITIES ARE CONSTRUCTED.
19. ALL SEDIMENT CONTROL DEVICES ARE TO BE CONSTRUCTED AND FULLY OPERATIONAL PRIOR TO ANY OTHER CONSTRUCTION OR GRADING.
20. ALL DISTURBED AREAS TO BE GRASSED PER CITY OF FAIRHOPE STANDARDS.
21. ALL SLOPES SHALL BE STABILIZED PER CITY OF FAIRHOPE STANDARDS.
22. GRASS AREAS DISTURBED DURING CONSTRUCTION SHALL BE REPLACED WITH GRASS IN KIND. IN AREAS OF INDECIPHERABLE GRASSES-USE CENTIPEDE.
23. IT IS THE CONTRACTOR'S RESPONSIBILITY TO PERFORM REQUIRED MAINTENANCE OF ALL EROSION AND SEDIMENT CONTROL DEVICES TO ENSURE THEIR FUNCTION AT ALL TIMES.

UTILITY PLAN NOTES

1. THE CONTRACTOR SHALL NOTIFY WAS Design, Inc CONSTRUCTION SURVEILLANCE REPRESENTATIVE AND LOCAL JURISDICTIONAL INSPECTOR 48 HOURS BEFORE THE BEGINNING OF EACH PHASE OF CONSTRUCTION.
2. ALL WORK SHALL COMPLY WITH APPLICABLE STATE, FEDERAL, AND LOCAL CODES, AND ALL NECESSARY LICENSES AND PERMITS SHALL BE OBTAINED BY THE CONTRACTOR AT HIS EXPENSE UNLESS PREVIOUSLY OBTAINED BY THE OWNER/DEVELOPER.
3. THE CONTRACTOR SHALL IMMEDIATELY INFORM THE LANDSCAPE ARCHITECT AND/OR CITY ENGINEER OF ANY DISCREPANCIES OR ERRORS HE DISCOVERS IN THE PLAN.
4. DEVIATION FROM THESE PLANS AND NOTES WITHOUT THE PRIOR CONSENT OF THE OWNER OR HIS REPRESENTATIVE OR THE LANDSCAPE ARCHITECT AND/OR CITY ENGINEER MAY BE CAUSE FOR THE WORK TO BE UNACCEPTABLE.
5. THE CONTRACTOR SHALL COORDINATE LOCATION AND INSTALLATION OF ALL UNDERGROUND UTILITIES AND APPURTENANCES TO MINIMIZE DISTURBING CURBING, PAVING AND COMPACTED SUBGRADE.
6. UTILITY COORDINATION SHALL BE INCLUDED IN THE PROJECT SCHEDULE AND IT IS THE RESPONSIBILITY OF THE CONTRACTOR TO ASSURE THAT THE PROJECT SCHEDULE INCLUDES THE NECESSARY RELOCATION. THE CONTRACTOR SHOULD SEEK ASSISTANCE FROM ALL UTILITY COMPANIES TO LOCATE AND PROTECT THEIR FACILITIES.
7. THE CONTRACTOR SHALL BE RESPONSIBLE FOR ANY DAMAGE DONE BY HIS EQUIPMENT TO EXISTING UTILITIES, AND CITY OF FAIRHOPE PROPERTY.
8. ALL WATER AND SANITARY SEWER CONSTRUCTION METHODS AND MATERIALS SHALL CONFORM TO THE FAIRHOPE UTILITIES COMPANIES STANDARD SPECIFICATIONS.
9. ALL EXCESS MATERIAL FROM EXCAVATION SHALL BE DISPOSED OF BY THE CONTRACTOR. COST FOR THIS WORK SHALL BE INCLUDED IN OTHER ITEMS OF WORK.
10. BEDDING REQUIREMENTS SPECIFIED HEREIN ARE TO BE CONSIDERED AS MINIMUMS FOR RELATIVELY DRY, STABLE EARTH CONDITIONS. ADDITIONAL BEDDING SHALL BE REQUIRED FOR ROCK TRENCHED AND WET AREAS. THE CONTRACTOR SHALL HAVE THE RESPONSIBILITY TO PROVIDE SUCH ADDITIONAL BEDDING AS MAY BE REQUIRED TO PROPERLY CONSTRUCT THE WORK.

GRADING AND DRAINAGE NOTES

1. THE CONTRACTOR SHALL FURNISH AND MAINTAIN ALL NECESSARY BARRICADES AROUND WORK AND SHALL PROVIDE PROTECTION AGAINST WATER DAMAGE AND SOIL EROSION.
2. ALL SILT BARRIERS MUST BE PLACED AS ACCESS IS OBTAINED DURING CLEARING. NO GRADING SHALL BE DONE UNTIL SILT BARRIER AND DETENTION FACILITIES ARE CONSTRUCTED.
3. ALL SEDIMENT CONTROL DEVICES ARE TO BE CONSTRUCTED AND FULLY OPERATIONAL PRIOR TO ANY OTHER CONSTRUCTION OR GRADING.
4. ALL SLOPES SHALL BE STABILIZED AS SOON AS POSSIBLE.
5. COMPACTION OF THE BACKFILL OF ALL TRENCHES SHALL BE COMPACTED TO THE DENSITY OF 95% OF THEORETICAL MAXIMUM DRY DENSITY (ATM D698). BACKFILL MATERIAL SHALL BE FREE FROM ROOTS, STUMPS OR OTHER FOREIGN DEBRIS AND SHALL BE PLACED AT OR NEAR OPTIMUM MOISTURE. CORRECTION OF ANY TRENCH SETTLEMENT WITHIN A YEAR FROM THE DATE OF APPROVAL WILL BE THE RESPONSIBILITY OF THE CONTRACTOR.
6. ALL FILL MATERIAL TO BE UTILIZED ON THE PROJECT SHALL BE FREE OF ORGANIC OR OTHERWISE DELETERIOUS MATERIALS AND COMPACTED TO MINIMUM DRY DENSITIES CORRESPONDING TO 95% OF MAXIMUM DRY DENSITY AS OBTAINED BY STANDARD PROCTOR, ASTM D698 AND AT LEAST 98% OF STANDARD PROCTOR WITHIN 1 FOOT BELOW PAVEMENT SUBGRADE. FILL SHALL BE PLACED IN LIFTS NOT TO EXCEED 6 INCHES IN COMPACTED FILL THICKNESS. A REPORT FROM A GEOTECHNICAL LANDSCAPE ARCHITECT AND/OR CITY ENGINEER WILL BE REQUIRED BY THE LOCAL JURISDICTIONAL INSPECTOR.
7. MAXIMUM SLOPE OF EMBANKMENT SHALL BE 3.0 FEET HORIZONTAL TO 1.0 FOOT VERTICAL.
8. PROPOSED CONTOUR INTERVALS ARE AS LABELED. ALL PROPOSED CONTOURS ARE FINISHED GRADES.
9. THE CONTRACTOR WILL INSURE THAT POSITIVE AND ADEQUATE DRAINAGE IS MAINTAINED AT ALL TIMES WITHIN THE PROJECT LIMITS.
10. EXCESS EARTH CUT MATERIAL, IF ANY, SHALL BECOME THE RESPONSIBILITY OF THE CONTRACTOR AND SHALL BE REMOVED FROM THE SITE UNLESS OTHERWISE APPROVED TO BE PLACED ON SITE BY THE OWNER.
11. THE CONTRACTOR SHALL PROVIDE ANY EXCAVATION AND MATERIAL SAMPLES NECESSARY TO CONDUCT REQUIRED SOIL TESTS. ALL ARRANGEMENTS AND SCHEDULING FOR THE TESTING SHALL BE THE CONTRACTOR'S RESPONSIBILITY.
12. SOILS TESTING AND ON-SITE INSPECTION SHALL BE PERFORMED BY AN INDEPENDENT GEOTECHNICAL ENGINEER. THE SOILS ENGINEER SHALL PROVIDE COPIES OF TEST REPORTS TO THE CONTRACTOR, THE OWNER AND THE OWNER'S REPRESENTATIVE AND SHALL PROMPTLY NOTIFY THE OWNER, HIS REPRESENTATIVE AND THE CONTRACTOR SHOULD WORK PERFORMED BY THE CONTRACTOR FAIL TO MEET THESE SPECIFICATIONS.



NOT FOR CONSTRUCTION
 THESE PLANS HAVE NOT BEEN APPROVED
 BY THE GOVERNING AGENCY
 AND ARE SUBJECT TO CHANGE.



Improvements to
Stimpson Park Tennis Courts
 Fairhope, Alabama

Revisions		
No.	Date	Revisions / Submissions
	05.07.15	90% CD
	07.10.15	ISSUED FOR BID

TRS Drawn LCW Checked 1512012-033 Project No. 2/5/15 Date	Registration
--	------------------

Sheet Title

GENERAL NOTES

Sheet No.

LG500