



**Thursday,  
June 4th  
5-7pm**

*(please see page 4 for more details)*

**If you would like to receive our newsletter electronically, please stop by the front desk or call us at (251) 928-2835 with your e-mail address.**

# Mark Your Calendar

Monday	Tuesday	Wednesday	Thursday	Friday
1 <b>Welcome Back!!!!</b>	2	3 <b>Birthday Bash (10:30am)</b> 	4 5-7pm <b>BINGO NIGHT!</b> 	5
8	9 9-10am <b>Coffee with a COP</b> 	10 Healthy Living, Healthy You 10-11am (see page 7 for details)  Bingo Bonanza 1-3pm <i>(no need to bring your own prizes)</i>	11 Games & Goodies 2-3pm (please see page 7 for details)  Cabaret Dance (7-10pm) Band: Exit 105	12
15	16	17 11am-12pm <b>FEED YOUR MIND</b>  (please see page 7 for details)	18 "Welcome Back"  ICE CREAM SOCIAL 2-3pm	19
22	23	24 1-3pm 	25 Cabaret Dance (7-10pm) Band: Roger & Elaine 	26
29	30			

# Daily Activities for June

## MONDAY

- 9:00-10:00 Tone & Stretch with Joni  
12:00-1:00 **NO POT LUCK LUNCH, THIS MONTH**  
12:30-4:00 Eastern Shore Duplicate Bridge Club (\$3 per game)  
For more information, call Art Meyers at 251-626-5109  
www.easternshorebridgeclub.com  
1:00-4:00 Open Cards, Mahjong & Other Games  
1:00-4:30 Hand, Knee & Foot



## TUESDAY

- 8:00-9:00 Helen McKee Senior Stretch Class  
9:00-10:00 **COFFEE WITH A COP (June 9th)**, Sponsored by **Lickin' Good Donuts**  
9:00-10:00 Low Impact Aerobics Class with Joni  
9:00-12:00 Jam N' Folks Music Group (Audiences always appreciated!)  
9:30-2:00 Jubilee Knitters  
12:30-4:00 Open Cards, Hand & Foot, Party Bridge, Scrabble, Cribbage, etc.  
(Must bring your own foursome)  
12:30-4:00 299 Duplicate Bridge (For more information, contact Janet Anderson at 251-990-5114)  
1:00-4:00 Christine Linson Watercolor Painting Class (Please call 251-990-9091, for more details or see below)

## WEDNESDAY

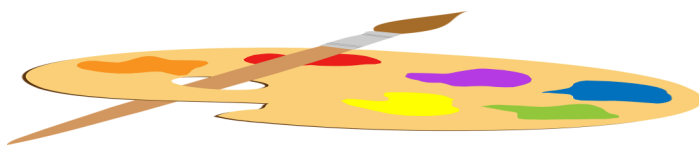
- 9:00-10:00 Line Dancing (\$5 fee)  
10:30-11:30 **BIRTHDAY BASH (June 3rd)**, Sponsored by **Atlantes Financial Advisors & Wolfe-Bayview Funeral Home**  
10:00-11:00 **HEALTHY LIVING, HEALTHY YOU (June 10th)**, please see page 7 for more details  
10:45-1:45 **NO LUNCH TRIP ON THE BUS, THIS MONTH**  
11:00-12:00 **FEED YOUR MIND (June 17th)**, Sponsored by **Country Place Senior Living**, \$2 per person, please see page 7 for more details  
12:30-4:00 Open Cards, Mahjong and Other Games  
(Must Bring your own foursome)  
12:30-4:00 Eastern Shore Duplicate Bridge Club (\$3 per game)  
1:00-3:00 **BINGO BONANZA (June 10th)**, Sponsored by **Tender Loving Care Sitters, LLC** (no need to bring your own prize to this Bingo, as we have a sponsor, who will be bringing prizes!!!!)  
1:00-3:00 **BINGO (June 24th)**, Sponsored by **Kindred Home Health & Hospice**  
1:00-4:30 Hand, Knee & Foot

**\*\*Pool/Billiard room, available for open play, Monday-Friday, from 8am-4:30pm\*\***

### Christine Linson Watercolor Painting Class

The class is fun and easy to join!! You'll learn the joy of watercolor painting, with Christine Linson, a Fairhope Artist, who owned her own gallery in Fairhope for 20 years.

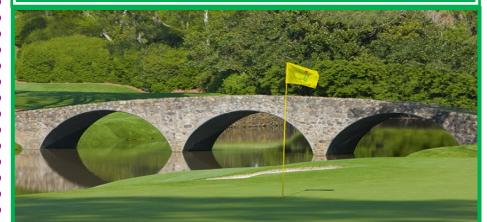
Tuesday's, from 1-4pm



The fee, per class is \$25 and can be paid directly to Christine.

### Golf Anyone?

The Nix Golfers play every Tuesday at 8:00am in a fun-filled 18 hole scramble at Quail Creek. The cost is \$3 + Green & Cart fee. For more details and to sign up, please contact Bob Mull @ 251-990-9958 or [missmary6@bellsouth.net](mailto:missmary6@bellsouth.net)





## THURSDAY

- 8:00-9:00 Helen McKee Senior Stretch Class  
9:00-11:00 **BILLIARDS LEAGUE**  
9:00-10:00 Low Impact Aerobics Class with Joni  
9:30-10:30 Grief Support (Sponsored by **Covenant Care & Diane Gray**)  
12:30-4:00 Open Cards & Other Games (Must bring your own foursome)  
12:30-4:00 Eastern Shore Duplicate Bridge Club (\$3 per game)  
1:30-3:30 Coffee & Conversation  
(Come and join in on an afternoon of fellowship and stimulating conversation. All are welcome to add their own information or opinions and to listen to those of others)  
2:00-3:00 **GAMES & GOODIES (June 11th)**, Sponsored by **Southern Care Hospice Services**, (please see page 7 more details)  
2:00-3:00 **"WELCOME BACK" ICE CREAM SOCIAL (June 18th)**  
(Join us for ice cream, friends and door prizes!! Sponsored by **Community Hospice**)  
5:00-7:00 **BIG BINGO NIGHT (June 4th)**, please see below for more details  
5:30-6:30 **SOCIAL BALLROOM DANCE CLASS**, please see page 7 for more details  
7:00-10:00 **FAIRHOPE CABARET DANCE (June 11th & 25th)**, please see page 7 for more details



## FRIDAY

- 9:00-10:00 Gold Zumba with Joni  
12:30-4:00 Eastern Shore Duplicate Bridge Club (\$3 per game)  
12:30-4:00 Open Cards  
12:30-4:00 Mexican Dominoes



**BINGO**

# Big Bingo Night

Thursday, June 4th  
5-7pm

**\$5, keeps you playing for the whole night!!**

Join us for Bingo, prizes, refreshments and fun!!!!

**BINGO**

**BINGO**

**BINGO**



## Fairhope Cabaret Dance

June 11th: Exit 105

(Theme: Tacky Tourist)

June 25th: Roger & Elaine

7-10pm

\$5 (Members)

\$9 (Non-Members)

**Come out and enjoy an evening of live music, refreshments, dancing and fun!!**

**Thanks very much to our Dance Volunteers:**

Louise Eckman, Dolly Guy, Fran Hocquard & Betty Williamson

## Games & Goodies

Join us for a fun, laid back and pleasant afternoon, playing some board games and enjoying some tasty snacks and treats!!!!



Thursday, June 11th, 2-3pm

(free of charge, for members)

## Healthy Living, Healthy You!!



Please join us for a fun and informative session, about healthy living tips and techniques!!

Wednesday, June 10th,  
10-11am

(free of charge to members)



Wednesday, June 17th  
11am-12pm

**Betsy Ross &  
The American Flag  
"presentation"**

Join Karen White, for an enlightening session and a delicious lunch!!!!

\$2, per person

## Donations and Dues

Just a reminder to please donate to our refreshments fund when you are enjoying the coffee, cookies and many other refreshments we serve around the center. These donations are what we use to purchase the snacks and coffee you are served at the center everyday. Thank you for your ongoing support of the Nix Center and our programs.

Please remember that you must be a Nix Center member to participate in our exercise classes and other daily activities. So, please make sure that your membership is current.

We thank you for your cooperation!

## SOCIAL BALLROOM DANCE CLASS



Thursday's

Have fun learning various dances, such as: Waltz, Rumba, Swing, Fox Trot, etc., from our experienced dance instructor, Skip Smith!!

(5 week session; \$35 per person)

(please call Skip, for more details and to register, 251-209-4370)

## Tips To Stay Well & Healthy

Wash hands often...

Use hand sanitizer...

Cover your cough (not with your hands)...

Cover your sneeze (not with your hands)...

Avoid shaking hands...

Throw all used tissues away...

Avoid touching your face, eyes and ears...

You MUST stay home if you are ill...

**Please stay healthy!!!!!!**



Have you moved lately?  
New telephone number?  
Started using E-mail?



Stop by the Nix Center front desk to update your membership information.



Fairhope American Legion  
Monday Evening Dinners

Stop by the American Legion, at 5:30pm, each Monday, for a wonderful meal and some time to socialize with friends!!!!

**\$7, per person**

(Bingo is played on the last Monday of each month)

## The James P. Nix Senior Activity Center

### Location

One Bayou Drive  
Fairhope, Alabama  
36532

**(251) 928-2835**

**Fax: (251) 990-0207**

### Hours

8:00 a.m. - 5:00 p.m.  
Monday - Friday

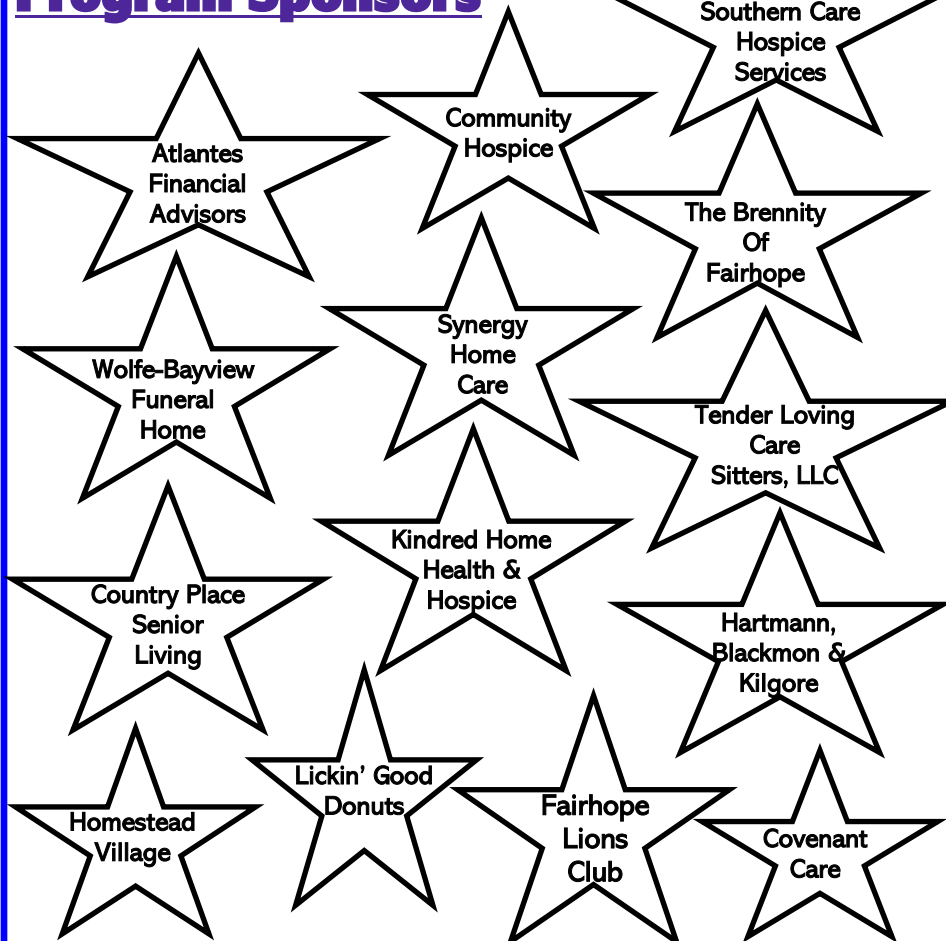
### Website

[www.cofairhope.com](http://www.cofairhope.com)

### Email

[Ari.tillman@fairhopeal.gov](mailto:Ari.tillman@fairhopeal.gov)

## James P. Nix Center Program Sponsors



**Your kindness and generosity is sincerely appreciated!!!!**

### Nix Center Team

**Ari Tillman**  
Facility Manager  
**Angie Dennis**  
Programs Coordinator  
**Cecily Cannon**  
Rentals Coordinator  
**Sonya Reed**  
Member Services  
**Carla Morgan**  
Front Desk  
**Margie Smitherman**  
Custodian  
**Georgia Thomas**  
Bus Driver

This publication is produced by the James P. Nix Center. Printing of this newsletter is provided by Hartmann, Blackmon & Kilgore, P.C. &



Homestead Village.