

---

# TOWN HALL MEETING

**CITY OF FAIRHOPE**

Karin Wilson, Mayor

**APRIL 4, 2017**

Rotary Youth Club

---

# WE ARE FAIRHOPE

## OUR MISSION

The **CITY OF FAIRHOPE** seeks to improve the **quality of life** for all communities through demonstrative, trustworthy leadership.

We are committed to a **sustainable future**, promoting environmentally-sound conservation alongside preservation efforts that protect our unique heritage.

The City believes that **open government** and the easy exchange of public information creates community ownership.

---

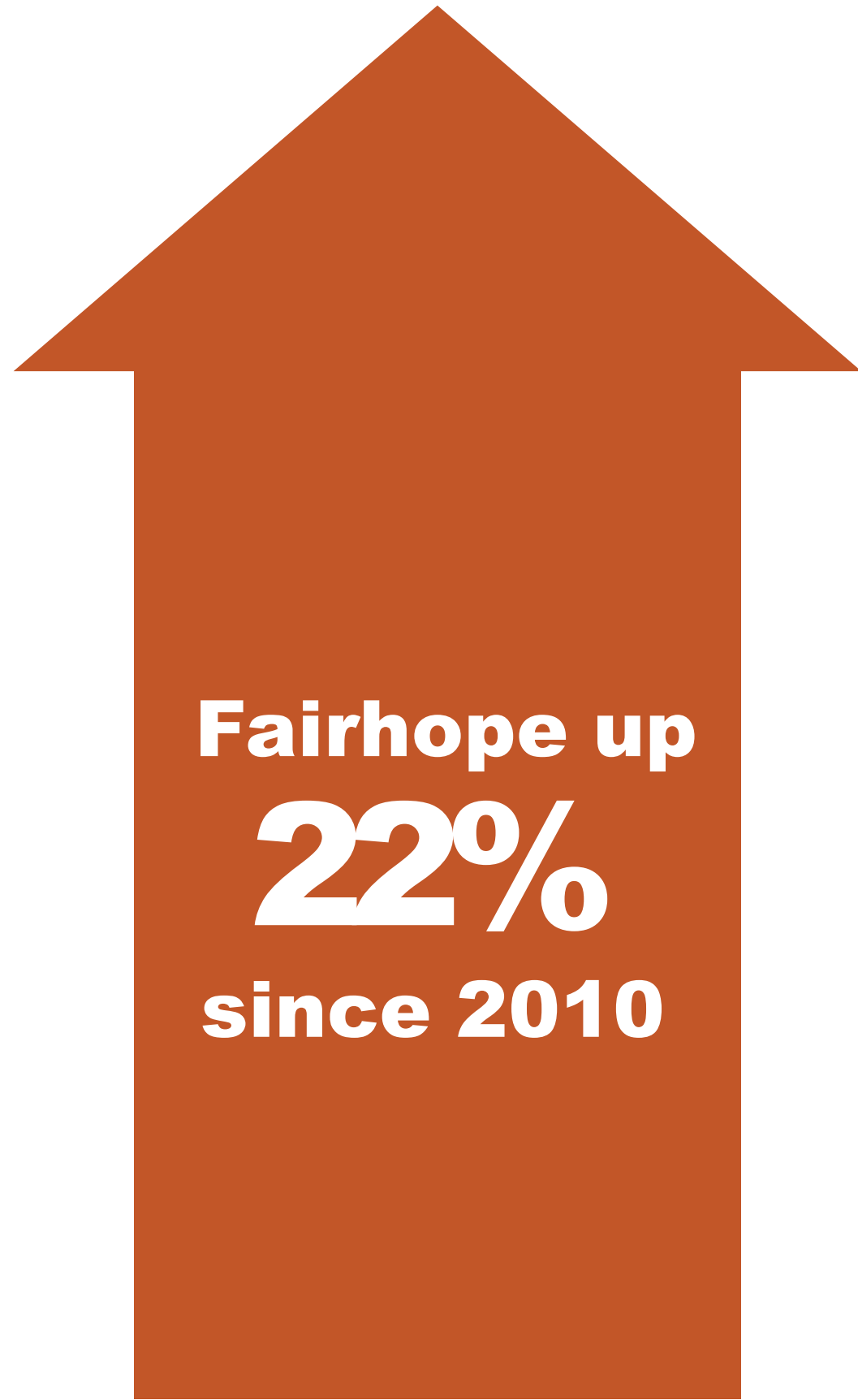
# THE BIG ISSUE

**FAIRHOPE'S GROWTH  
IS STRETCHING  
BUDGETS FOR  
INFRASTRUCTURE  
AND SCHOOLS**

---

# POPULATION GROWTH

**FASTEST GROWING  
CITY IN ALABAMA'S  
FASTEST GROWING  
COUNTY**



Fairhope up  
**22%**  
since 2010



---

# **EXTENSIVE GROWTH**

**INFRASTRUCTURE  
& UTILITY  
UPGRADES LONG  
OVERDUE**

**\$15-\$25 million**

**required to improve aging utility  
infrastructure**

**Community Parks & Facilities**  
**Repair and upgrades are critical**

**Storm Water**

**Management of our natural  
resources underfunded**

**Fairhope's Character**

**Growth outside City limits is  
changing the character of the City  
that we value**

---

# **The Impact of Growth on our SCHOOLS:**

**24.6% Growth in Fairhope Schools/10 years**

**17.3% Growth throughout Baldwin County/10 years**

ANNING

CAPITAL  
INVESTMENTS

PUBLIC  
WORKS

---

# **SCHOOL DISTRICT SHIFTS**

**STUDENT GROWTH RATE NOW  
HIGHER OUTSIDE CITY LIMITS**

**48.7% inside City limits**

**51.3% Outside City limits**

---

# **CITY OF FAIRHOPE COST TO SUBSIDIZE OUR SCHOOLS**




- 2017-18 over \$1 million and increasing each year
- Who is paying for the subsidy?

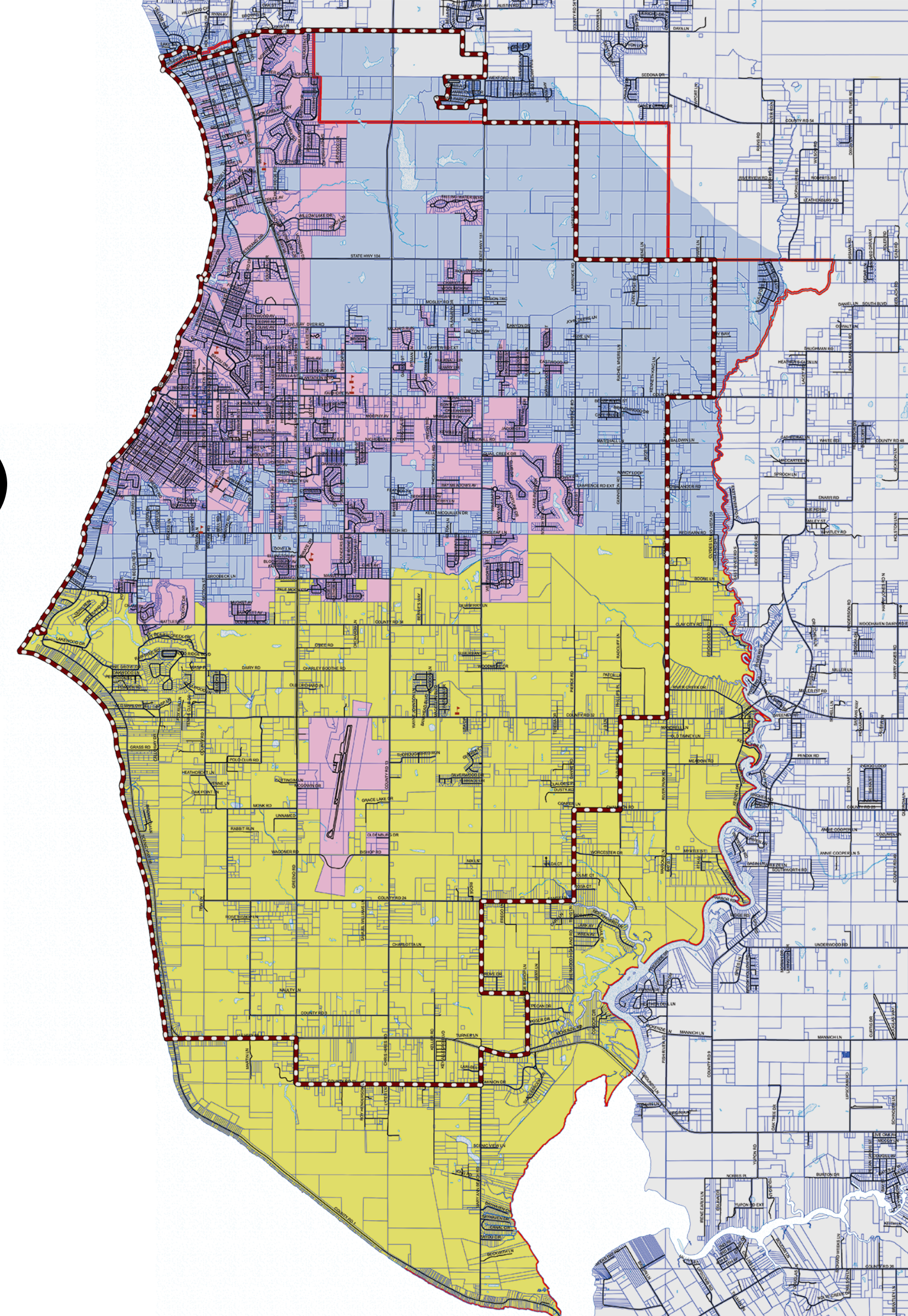


---

# OUR SCHOOL DISTRICT

**Citizens residing inside the City limits through their City property taxes (15 mil = max allowed)**

-  FAIRHOPE CITY LIMITS
-  FAIRHOPE SCHOOL DIST.
-  NEWTON SCHOOL DIST.





---

# **VALUE of ONE MIL**

**Inside City limits is \$321,735**

**Outside City limits is \$305,190**

**3 mill value for Fairhope Feeder Pattern inside city limits is \$965,205**

**3 mill value for Fairhope Feeder Pattern outside city limits is \$915,569**

**Total 3 mill value for Fairhope Feeder Pattern is \$1,880,774**

---

# SCHOOL DISTRICT PENNY TAX

**RECESSION-ERA SCHOOL  
FUNDING REMAINS IN  
PLACE**

**OUR FUTURE LEADERS  
NEED MORE EDUCATION  
RESOURCES**

**\$22 million less**

**is spent annually on County  
students than in 2008**

## **Penny Tax Distribution**

**Proposed:**

- **55% Baldwin County**
- **40% Schools**
- **5% AL Coastal Community College**

---

# HOW YOU CAN HELP

**CONTACT YOUR LOCAL  
LEGISLATORS**



---

# THANKS FOR ATTENDING

## **CITY OF FAIRHOPE**

Karin Wilson, Mayor

## **SEND THOUGHTS AND COMMENTS TO:**

[townhall@fairhopeal.gov](mailto:townhall@fairhopeal.gov)

251-928-2136